

RAB21 Polyclonal Antibody



Catalog Number: 160948

Product name

RAB21 Polyclonal Antibody

Specificity

Human, Mouse, Rat

Antibody description

Polyclonal antibody to RAB21

Preparation

Antigen: Recombinant fusion protein containing a sequence corresponding to amino acids 1-225 of human RAB21 (NP_055814.1).

Formulation

PBS with 0.02% sodium azide, 50% glycerol, pH7.3.

Storage

Store at -20°C. Avoid freeze / thaw cycles.

Clonality

Polyclonal

Ig Type

Rabbit IgG

Applications

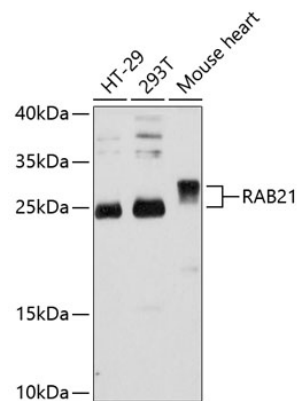
WB, IF

Dilutions

WB 1:500 - 1:2000

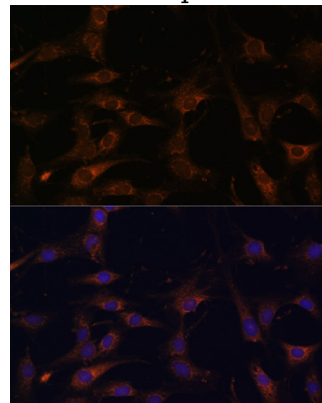
IF 1:50 - 1:200

Validations



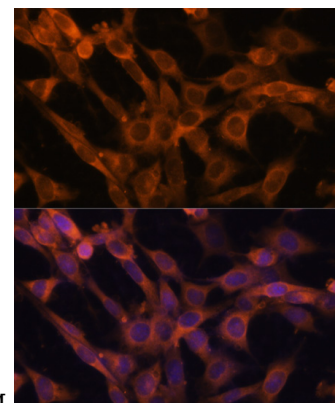
Western blot - RAB21 Polyclonal Antibody

Western blot analysis of extracts of various cell lines, using RAB21 antibody at 1:3000 dilution. Secondary antibody: HRP Goat Anti-Rabbit IgG (H+L) at 1:10000 dilution. Lysates/proteins: 25ug per lane. Blocking buffer: 3% nonfat dry milk in TBST. Detection: ECL Basic Kit. Exposure time: 30s.



Immunofluorescence - RAB21 Polyclonal Antibody

Immunofluorescence analysis of C6 cells using RAB21 antibody at dilution of 1:100. Blue: DAPI



for nuclear staining.

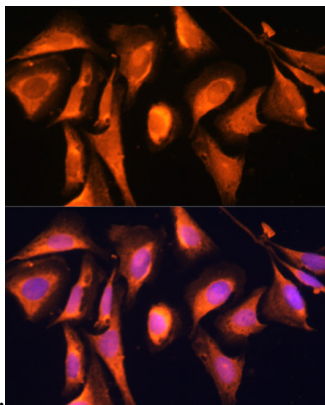
RAB21 Polyclonal Antibody



Catalog Number: 160948

Immunofluorescence - RAB21 Polyclonal Antibody

Immunofluorescence analysis of NIH-3T3 cells
using RAB21 antibody at dilution of 1:100. Blue:

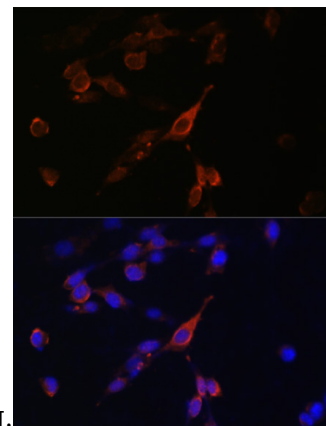


DAPI for nuclear staining.

Immunofluorescence - RAB21 Polyclonal Antibody

Immunofluorescence analysis of U-2 OS cells

using RAB21 antibody at dilution of 1:100. Blue:



DAPI for nuclear staining.

Immunofluorescence - RAB21 Polyclonal Antibody

Immunofluorescence analysis of U-2 OS cells
using RAB21 antibody at dilution of 1:100. Blue:
DAPI for nuclear staining.