

KL Polyclonal Antibody

Catalog Number: 160923

Product name

KL Polyclonal Antibody

Specificity

Human, Mouse, Rat

Antibody description

Polyclonal antibody to KL

Preparation

Antigen: Recombinant fusion protein containing a sequence corresponding to amino acids 1-200 of human KL (NP_004786.2).

Formulation

PBS with 0.02% sodium azide, 50% glycerol, pH7.3.

Storage

Store at -20°C. Avoid freeze / thaw cycles.

Clonality

Polyclonal

Ig Type

Rabbit IgG

Applications

WB, IHC, IF

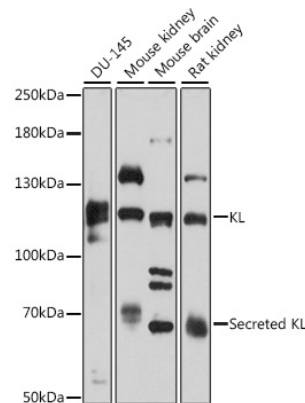
Dilutions

WB 1:500 - 1:2000

IHC 1:50 - 1:200

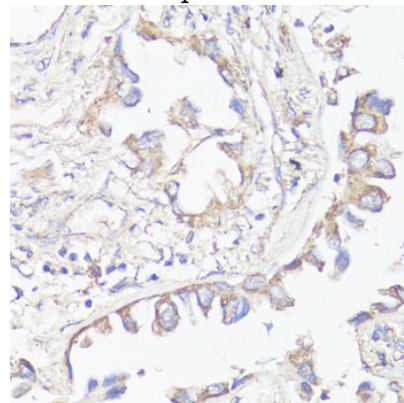
IF 1:50 - 1:200

Validations



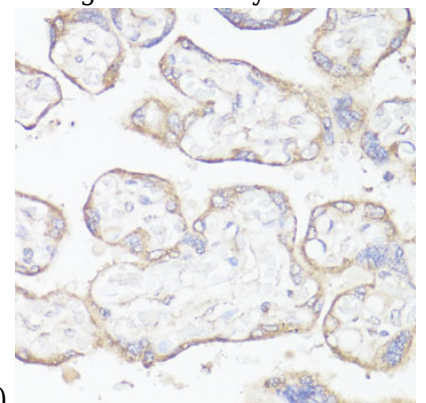
Western blot - KL Polyclonal Antibody

Western blot analysis of extracts of various cell lines, using KL antibody at 1:3000 dilution. Secondary antibody: HRP Goat Anti-Rabbit IgG (H+L) at 1:10000 dilution. Lysates/proteins: 25ug per lane. Blocking buffer: 3% nonfat dry milk in TBST. Detection: ECL Basic Kit. Exposure time: 5s.



Immunohistochemistry - KL Polyclonal Antibody

Immunohistochemistry of paraffin-embedded human lung cancer using KL antibody at dilution



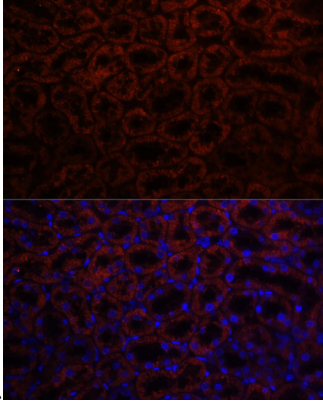
of 1:200 (40x lens).

KL Polyclonal Antibody

Catalog Number: 160923

Immunohistochemistry - KL Polyclonal Antibody

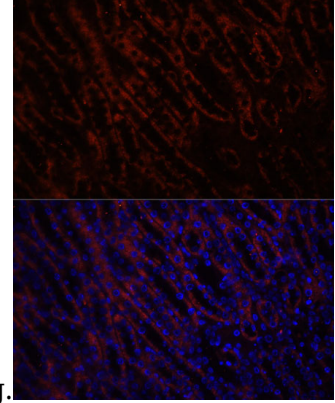
Immunohistochemistry of paraffin-embedded human placenta using KL antibody at dilution of



1:200 (40x lens).

Immunofluorescence - KL Polyclonal Antibody

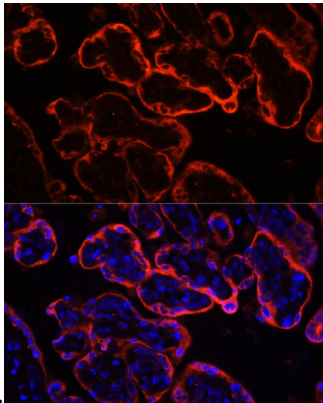
Immunofluorescence analysis of human placenta using KL antibody at dilution of 1:100. Blue: DAPI



for nuclear staining.

Immunofluorescence - KL Polyclonal Antibody

Immunofluorescence analysis of rat kidney using KL antibody at dilution of 1:100. Blue: DAPI for



nuclear staining.

Immunofluorescence - KL Polyclonal Antibody

Immunofluorescence analysis of mouse kidney using KL antibody at dilution of 1:100. Blue: DAPI for nuclear staining.