

# GGA2 Polyclonal Antibody



Catalog Number: 160878

## Product name

GGA2 Polyclonal Antibody

## Specificity

Human, Mouse, Rat

## Antibody description

Polyclonal antibody to GGA2

## Preparation

Antigen: Recombinant fusion protein containing a sequence corresponding to amino acids 1-300 of human GGA2 (NP\_055859.1).

## Formulation

PBS with 0.02% sodium azide, 50% glycerol, pH7.3.

## Storage

Store at -20°C. Avoid freeze / thaw cycles.

## Clonality

Polyclonal

## Ig Type

Rabbit IgG

## Applications

WB, IHC, IF

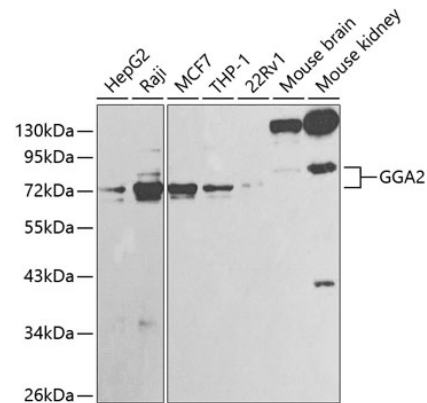
## Dilutions

WB 1:500 - 1:2000

IHC 1:50 - 1:200

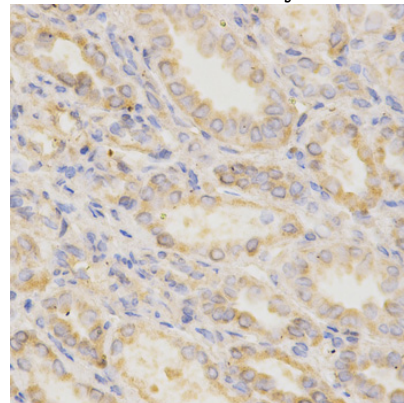
IF 1:50 - 1:200

## Validations



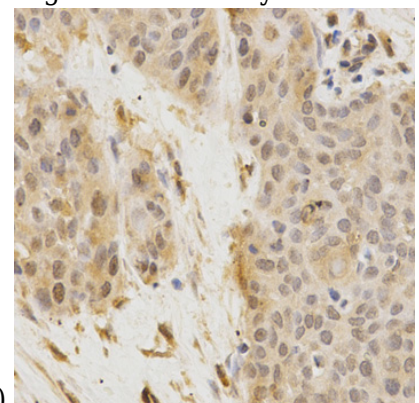
Western blot - GGA2 Polyclonal Antibody

Western blot analysis of extracts of various cell lines, using GGA2 antibody at 1:1000 dilution. Secondary antibody: HRP Goat Anti-Rabbit IgG (H+L) at 1:10000 dilution. Lysates/proteins: 25ug per lane. Blocking buffer: 3% nonfat dry milk in TBST.



Immunohistochemistry - GGA2 Polyclonal Antibody

Immunohistochemistry of paraffin-embedded human kidney using GGA2 Antibody at dilution of



1:200 (40x lens).

# GGA2 Polyclonal Antibody

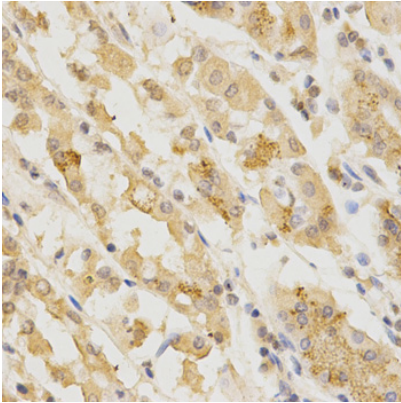


Catalog Number: 160878

---

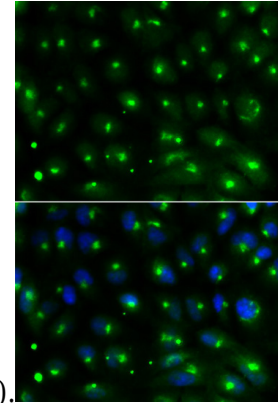
Immunohistochemistry - GGA2 Polyclonal Antibody

Immunohistochemistry of paraffin-embedded human esophageal cancer using GGA2 Antibody at dilution of 1:200 (40x lens).



Immunohistochemistry - GGA2 Polyclonal Antibody

Immunohistochemistry of paraffin-embedded human stomach using GGA2 Antibody at dilution



of 1:200 (40x lens).

Immunofluorescence - GGA2 Polyclonal Antibody

Immunofluorescence analysis of MCF-7 cells using GGA2 antibody . Blue: DAPI for nuclear staining.