

# P Glycoprotein Polyclonal Antibody



Catalog Number: 160830

## Product name

P Glycoprotein Polyclonal Antibody

## Specificity

Human, Mouse, Rat

## Antibody description

Polyclonal antibody to P Glycoprotein

## Preparation

Antigen: A synthetic peptide corresponding to a sequence within amino acids 600-700 of human P Glycoprotein (NP\_000918.2).

## Formulation

PBS with 0.02% sodium azide, 50% glycerol, pH7.3.

## Storage

Store at -20°C. Avoid freeze / thaw cycles.

## Clonality

Polyclonal

## Ig Type

Rabbit IgG

## Applications

WB, IHC, IF

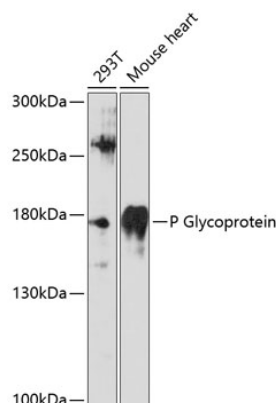
## Dilutions

WB 1:500 - 1:1000

IHC 1:50 - 1:200

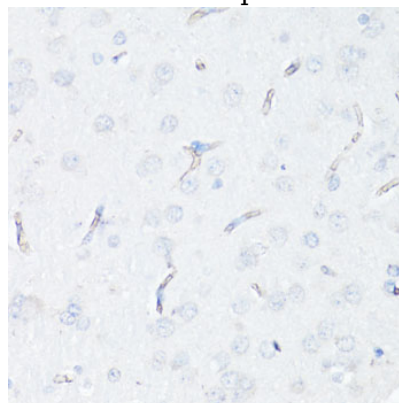
IF 1:50 - 1:200

## Validations



## Western blot - P Glycoprotein Polyclonal Antibody

Western blot analysis of extracts of various cell lines, using P Glycoprotein antibody at 1:3000 dilution. Secondary antibody: HRP Goat Anti-Rabbit IgG (H+L) at 1:10000 dilution. Lysates/proteins: 25ug per lane. Blocking buffer: 3% nonfat dry milk in TBST. Detection: ECL Enhanced Kit. Exposure time: 90s.



## Immunohistochemistry - P Glycoprotein Polyclonal Antibody

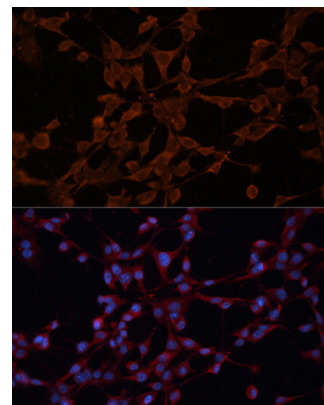
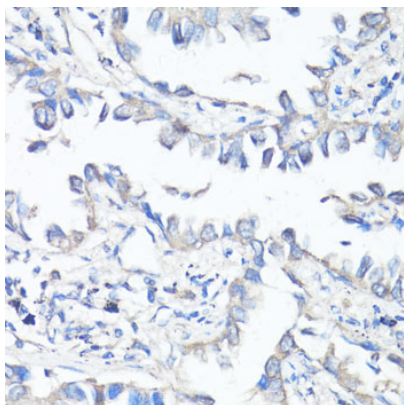
Immunohistochemistry of paraffin-embedded rat brain endothelial cells using P Glycoprotein antibody at dilution of 1:100 (40x lens).

# P Glycoprotein Polyclonal Antibody



Catalog Number: 160830

---



Immunohistochemistry - P Glycoprotein Polyclonal Antibody

Immunofluorescence - P Glycoprotein Polyclonal Antibody

Immunohistochemistry of paraffin-embedded human lung cancer using P Glycoprotein antibody at dilution of 1:100 (40x lens).

Immunofluorescence analysis of NIH/3T3 cells using P Glycoprotein antibody at dilution of 1:100. Blue: DAPI for nuclear staining.