

# SLC25A12 Polyclonal Antibody



Catalog Number: 160804

## General Information

### Product name:

SLC25A12 Polyclonal Antibody

### Immunogen:

### Applications:

WB

### Specificity:

Human, Mouse, Rat

### Antibody description:

Polyclonal antibody to SLC25A12

## Properties

### Preparation:

Antigen: Recombinant fusion protein containing a sequence corresponding to amino acids 1-180 of human SLC25A12 (NP\_003696.2).

### Formulation:

PBS with 0.02% sodium azide, 50% glycerol, pH7.3.

### Storage:

Store at -20°C. Avoid freeze / thaw cycles.

### Clonality:

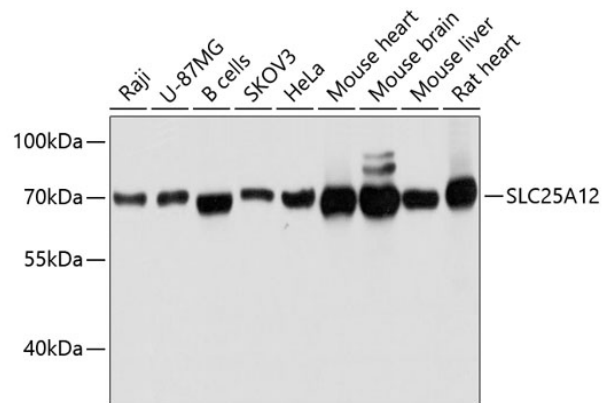
Polyclonal

**Ig Type:**Rabbit IgG

## Applications

WB 1:500 - 1:2000

## Validations



Western blot - SLC25A12 Polyclonal Antibody

Western blot analysis of extracts of various cell lines, using SLC25A12 antibody at 1:3000 dilution. Secondary antibody: HRP Goat Anti-Rabbit IgG (H+L) at 1:10000 dilution. Lysates/proteins: 25ug per lane. Blocking buffer: 3% nonfat dry milk in TBST. Detection: ECL Basic Kit. Exposure time: 1s.