

MAD1L1 Polyclonal Antibody



Catalog Number: 160762

Product name

MAD1L1 Polyclonal Antibody

Specificity

Human, Mouse

Antibody description

Polyclonal antibody to MAD1L1

Preparation

Antigen: Recombinant fusion protein containing a sequence corresponding to amino acids 360-700 of human MAD1L1 (NP_001013859.1).

Formulation

PBS with 0.02% sodium azide, 50% glycerol, pH7.3.

Storage

Store at -20°C. Avoid freeze / thaw cycles.

Clonality

Polyclonal

Ig Type

Rabbit IgG

Applications

WB, IHC, IF

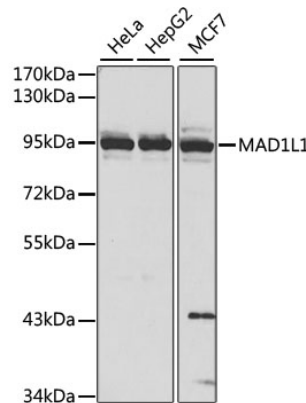
Dilutions

WB 1:500 - 1:2000

IHC 1:50 - 1:200

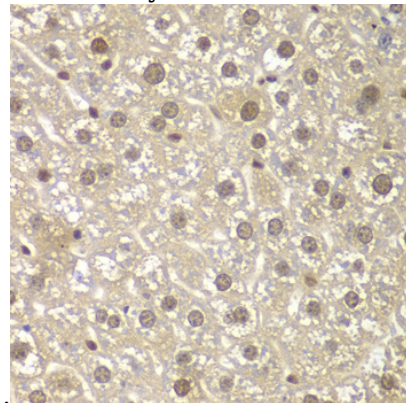
IF 1:50 - 1:200

Validations



Western blot - MAD1L1 Polyclonal Antibody

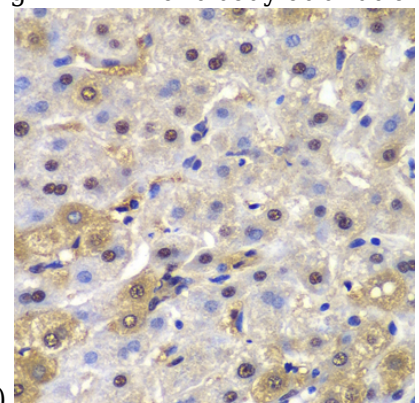
Western blot analysis of extracts of various cell lines, using MAD1L1 antibody at 1:1000 dilution. Secondary antibody: HRP Goat Anti-Rabbit IgG (H+L) at 1:10000 dilution. Lysates/proteins: 25ug per lane. Blocking buffer: 3% nonfat dry milk in TBST. Detection: ECL



Basic Kit .

Immunohistochemistry - MAD1L1 Polyclonal Antibody

Immunohistochemistry of paraffin-embedded mouse liver using MAD1L1 antibody at dilution of



1:100 (40x lens).

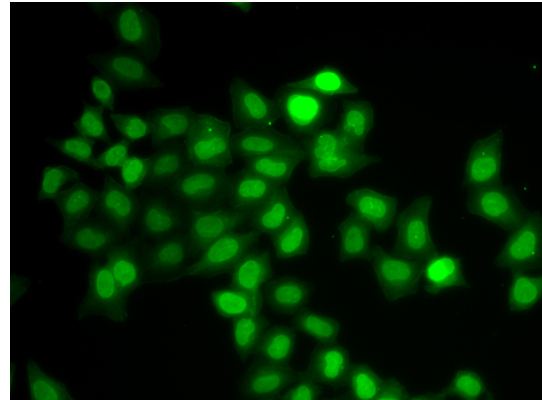
MAD1L1 Polyclonal Antibody



Catalog Number: 160762

Immunohistochemistry - MAD1L1 Polyclonal Antibody

Immunohistochemistry of paraffin-embedded human liver cancer using MAD1L1 antibody at dilution of 1:100 (40x lens).



Immunofluorescence - MAD1L1 Polyclonal Antibody

Immunofluorescence analysis of U2OS cells using MAD1L1 antibody .