

CD31 Polyclonal Antibody



Catalog Number: 160759

Product name

CD31 Polyclonal Antibody

Specificity

Human, Mouse

Antibody description

Polyclonal antibody to CD31

Preparation

Antigen: A synthetic peptide corresponding to a sequence within amino acids 600 to the C-terminus of mouse CD31 (NP_001292086.1).

Formulation

PBS with 0.02% sodium azide, 50% glycerol, pH7.3.

Storage

Store at -20°C. Avoid freeze / thaw cycles.

Clonality

Polyclonal

Ig Type

Rabbit IgG

Applications

WB, IHC, IF, IP

Dilutions

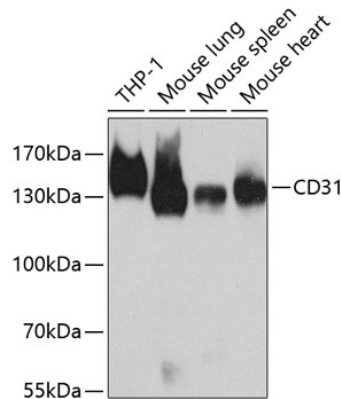
WB 1:500 - 1:2000

IHC 1:50 - 1:200

IF 1:50 - 1:200

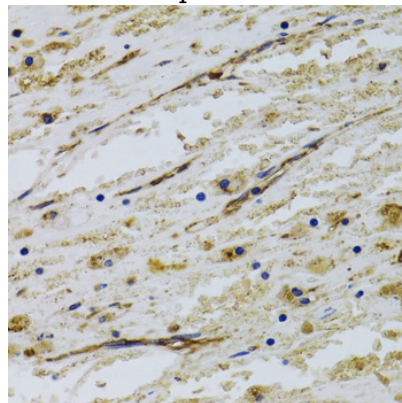
IP 1:50 - 1:200

Validations



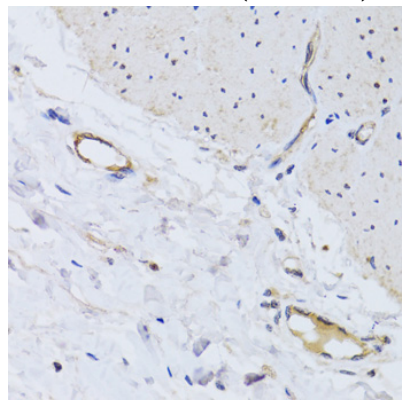
Western blot - CD31 Polyclonal Antibody

Western blot analysis of extracts of various cell lines, using CD31 antibody at 1:1000 dilution. Secondary antibody: HRP Goat Anti-Rabbit IgG (H+L) at 1:10000 dilution. Lysates/proteins: 25ug per lane. Blocking buffer: 3% nonfat dry milk in TBST. Detection: ECL Basic Kit. Exposure time: 30s.



Immunohistochemistry - CD31 Polyclonal Antibody

Immunohistochemistry of paraffin-embedded human liver cancer using CD31 antibody at dilution of 1:100 (40x lens).



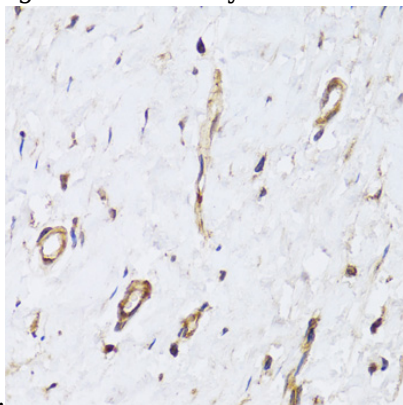
CD31 Polyclonal Antibody



Catalog Number: 160759

Immunohistochemistry - CD31 Polyclonal Antibody

Immunohistochemistry of paraffin-embedded human colon using CD31 antibody at dilution of



1:100 (40x lens).

Immunohistochemistry - CD31 Polyclonal Antibody

Immunohistochemistry of paraffin-embedded human breast cancer using CD31 antibody at dilution of 1:100 (40x lens).