

Tubulin Beta 2 Monoclonal Antibody



Catalog Number: 160727

Product name

Tubulin Beta 2 Monoclonal Antibody

Specificity

Human, Mouse, Rat

Antibody description

Monoclonal antibody to Tubulin Beta 2

Preparation

Antigen: A synthetic peptide of human Tubulin Beta 2.

Formulation

PBS with 0.02% sodium azide, 50% glycerol, pH7.3.

Storage

Store at -20°C. Avoid freeze / thaw cycles.

Clonality

Monoclonal

Ig Type

Rabbit IgG

Applications

WB, IHC, IF, IP

Dilutions

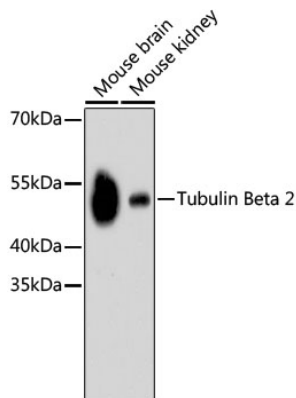
WB 1:500 - 1:2000

IHC 1:50 - 1:200

IF 1:50 - 1:200

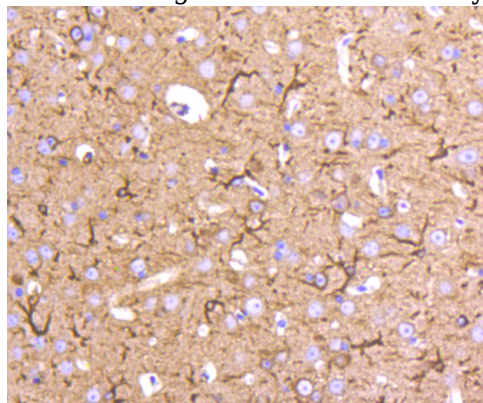
IP 1:20 - 1:50

Validations



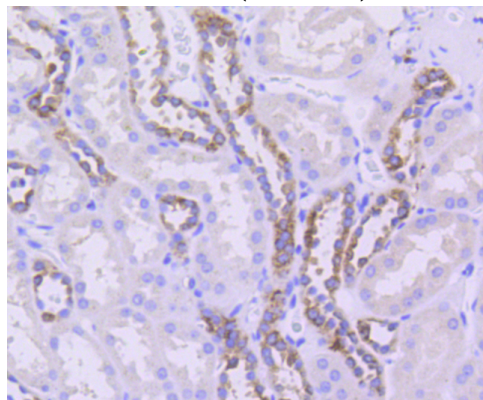
Western blot - Tubulin Beta 2 Monoclonal Antibody

Western blot analysis of extracts of various cell lines, using Tubulin Beta 2 antibody. Secondary antibody: HRP Goat Anti-Rabbit IgG (H+L) at 1:10000 dilution. Lysates/proteins: 25ug per lane. Blocking buffer: 3% nonfat dry milk in TBST.



Immunohistochemistry - Tubulin Beta 2 Monoclonal Antibody

Immunohistochemistry of paraffin-embedded mouse brain using Tubulin Beta 2 antibody at dilution of 1:100 (40x lens).



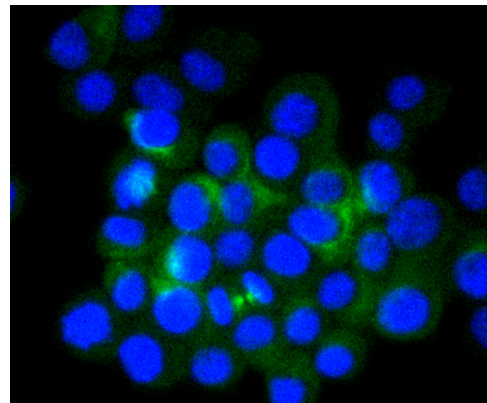
Tubulin Beta 2 Monoclonal Antibody



Catalog Number: 160727

Immunohistochemistry - Tubulin Beta 2 Monoclonal Antibody

Immunohistochemistry of paraffin-embedded human kidney using Tubulin Beta 2 antibody at dilution of 1:100 (40x lens).



Immunofluorescence - Tubulin Beta 2 Monoclonal Antibody

Immunofluorescence analysis of N2A cells using Tubulin Beta 2 antibody .