

# TLR2 Polyclonal Antibody

Catalog Number: 160707

## Product name

TLR2 Polyclonal Antibody

## Specificity

Human, Mouse, Rat

## Antibody description

Polyclonal antibody to TLR2

## Preparation

Antigen: A synthetic peptide of human TLR2

## Formulation

PBS with 0.02% sodium azide, 50% glycerol, pH7.3.

## Storage

Store at -20°C. Avoid freeze / thaw cycles.

## Clonality

Polyclonal

## Ig Type

Rabbit IgG

## Applications

WB, IHC, IF

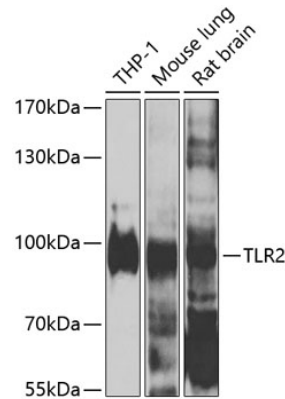
## Dilutions

WB 1:200 - 1:500

IHC 1:50 - 1:200

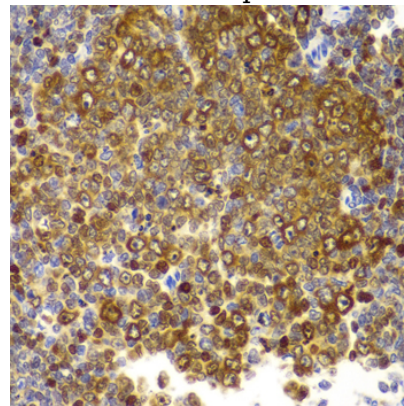
IF 1:50 - 1:100

## Validations



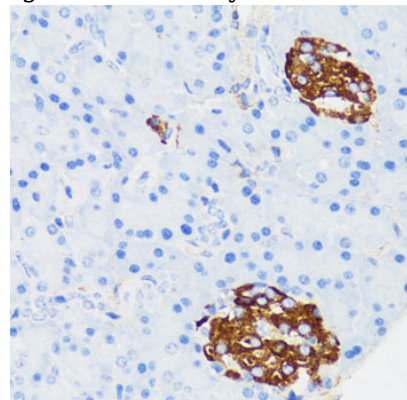
Western blot - TLR2 Polyclonal Antibody

Western blot analysis of extracts of various cell lines, using TLR2 antibody at 1:1000 dilution. Secondary antibody: HRP Goat Anti-Rabbit IgG (H+L) at 1:10000 dilution. Lysates/proteins: 25ug per lane. Blocking buffer: 3% nonfat dry milk in TBST. Detection: ECL Enhanced Kit. Exposure time: 20s.



Immunohistochemistry - TLR2 Polyclonal Antibody

Immunohistochemistry of paraffin-embedded rat spleen using TLR2 antibody at dilution of 1:100



(40x lens).

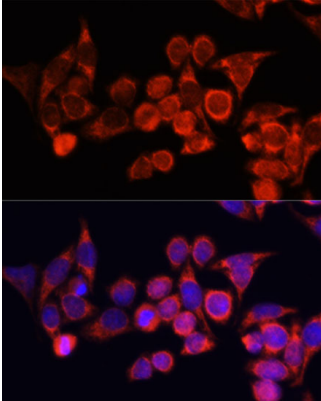
# TLR2 Polyclonal Antibody

Catalog Number: 160707

---

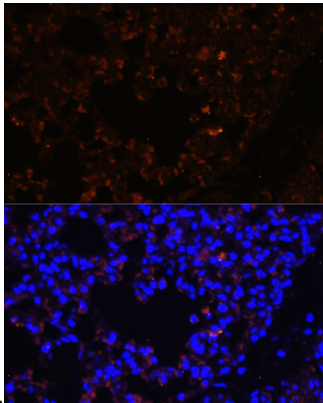
## Immunohistochemistry - TLR2 Polyclonal Antibody

Immunohistochemistry of paraffin-embedded mouse islets of langerhans using TLR2 antibody at dilution of 1:150 (40x lens).



## Immunofluorescence - TLR2 Polyclonal Antibody

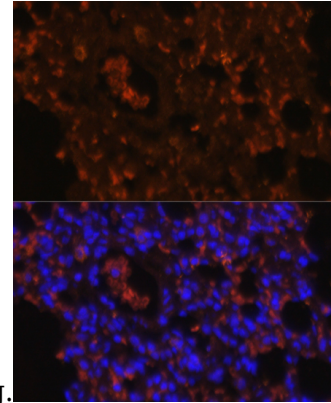
Immunofluorescence analysis of HeLa cells using TLR2 antibody at dilution of 1:100. Blue: DAPI for nuclear staining.



nuclear staining.

## Immunofluorescence - TLR2 Polyclonal Antibody

Immunofluorescence analysis of mouse lung using TLR2 antibody at dilution of 1:100. Blue: DAPI for nuclear staining.



nuclear staining.

## Immunofluorescence - TLR2 Polyclonal Antibody

Immunofluorescence analysis of rat lung using TLR2 antibody at dilution of 1:100. Blue: DAPI for nuclear staining.