

# LRRK2 Polyclonal Antibody



Catalog Number: 160662

## Product name

LRRK2 Polyclonal Antibody

## Specificity

Human

## Antibody description

Polyclonal antibody to LRRK2

## Preparation

Antigen: A synthetic peptide of human LRRK2

## Formulation

PBS with 0.02% sodium azide, pH7.3.

## Storage

Store at 4°C. Avoid freeze / thaw cycles.

## Clonality

Polyclonal

## Ig Type

Rabbit IgG

## Applications

WB, IHC, FC

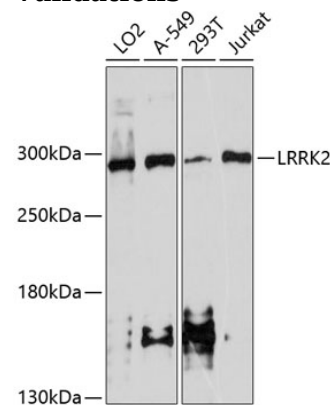
## Dilutions

WB 1:500 - 1:1000

IHC 1:20 - 1:50

FC 1:20 - 1:50

## Validations



Western blot - LRRK2 Polyclonal Antibody

Western blot analysis of extracts of various cell lines, using LRRK2 antibody at 1:1000 dilution. Secondary antibody: HRP Goat Anti-Rabbit IgG (H+L) at 1:10000 dilution. Lysates/proteins: 25ug per lane. Blocking buffer: 3% nonfat dry milk in TBST. Detection: ECL Enhanced Kit. Exposure time: 90s.