

FZR1 Polyclonal Antibody



Catalog Number: 160657

Product name

FZR1 Polyclonal Antibody

Specificity

Human

Antibody description

Polyclonal antibody to FZR1

Preparation

Antigen: A synthetic peptide of human FZR1

Formulation

PBS with 0.02% sodium azide, pH7.3.

Storage

Store at 4°C. Avoid freeze / thaw cycles.

Clonality

Polyclonal

Ig Type

Rabbit IgG

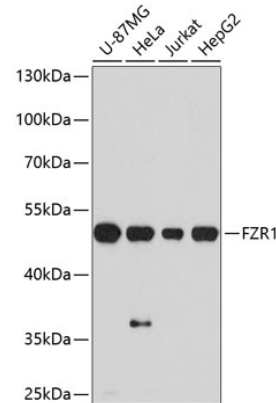
Applications

WB

Dilutions

WB 1:500 - 1:1000

Validations



Western blot - FZR1 Polyclonal Antibody

Western blot analysis of extracts of various cell lines, using FZR1 antibody at 1:1000 dilution. Secondary antibody: HRP Goat Anti-Rabbit IgG (H+L) at 1:10000 dilution. Lysates/proteins: 25ug per lane. Blocking buffer: 3% nonfat dry milk in TBST. Detection: ECL Basic Kit. Exposure time: 30s.