

HAPLN1 Monoclonal Antibody



Catalog Number: 160633

Product name

HAPLN1 Monoclonal Antibody

Specificity

Human, Mouse, Rat

Antibody description

Monoclonal antibody to HAPLN1

Preparation

Antigen: Recombinant protein of human HAPLN1

Formulation

PBS with 0.02% sodium azide, 50% glycerol, pH7.3.

Storage

Store at -20°C. Avoid freeze / thaw cycles.

Clonality

Monoclonal

Ig Type

Rabbit IgG

Applications

WB, IHC, IF

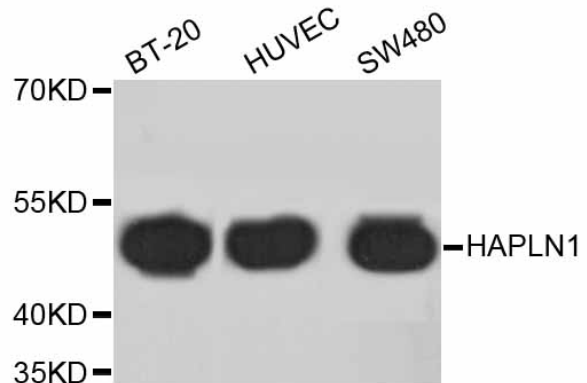
Dilutions

WB 1:500 - 1:2000

IHC 1:50 - 1:200

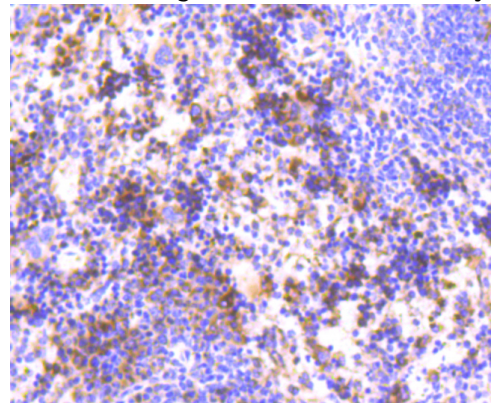
IF 1:50 - 1:200

Validations



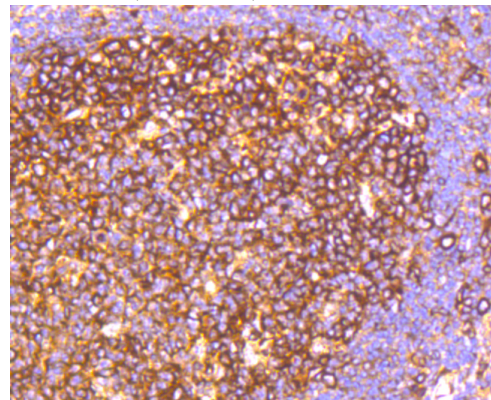
Western blot - HAPLN1 Monoclonal Antibody

Western blot analysis of extracts of various cell lines, using HAPLN1 antibody. Secondary antibody: HRP Goat Anti-Rabbit IgG (H+L) at 1:10000 dilution. Lysates/proteins: 25ug per lane. Blocking buffer: 3% nonfat dry milk in TBST.



Immunohistochemistry - HAPLN1 Monoclonal Antibody

Immunohistochemistry of paraffin-embedded mouse spleen using HAPLN1 antibody at dilution of 1:100 (40x lens).

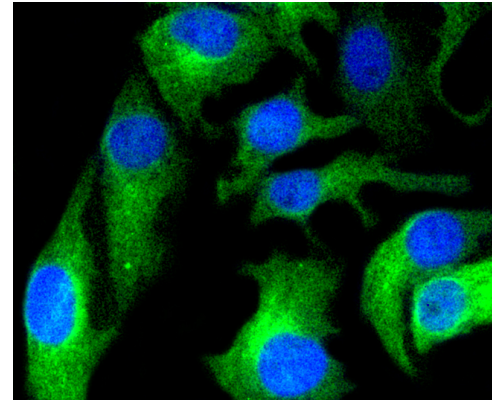
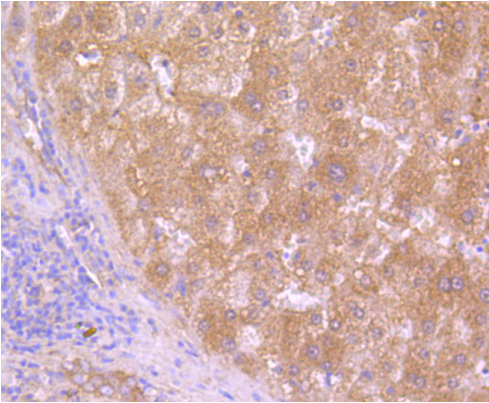


HAPLN1 Monoclonal Antibody

Catalog Number: 160633

Immunohistochemistry - HAPLN1 Monoclonal Antibody

Immunohistochemistry of paraffin-embedded human tonsil using HAPLN1 antibody at dilution of 1:100 (40x lens).

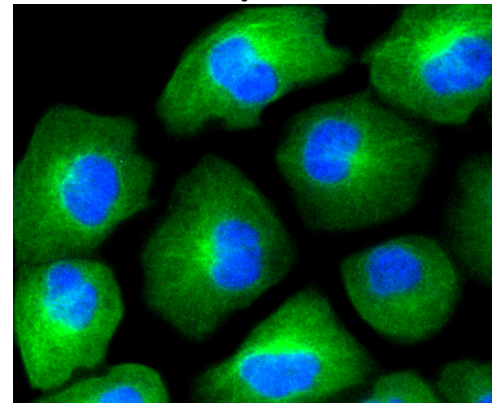
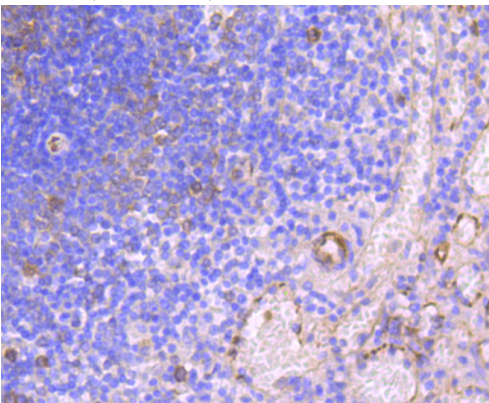


Immunofluorescence - HAPLN1 Monoclonal Antibody

Immunofluorescence analysis of BT-20 cells using HAPLN1 antibody .

Immunohistochemistry - HAPLN1 Monoclonal Antibody

Immunohistochemistry of paraffin-embedded human liver using HAPLN1 antibody at dilution of 1:100 (40x lens).

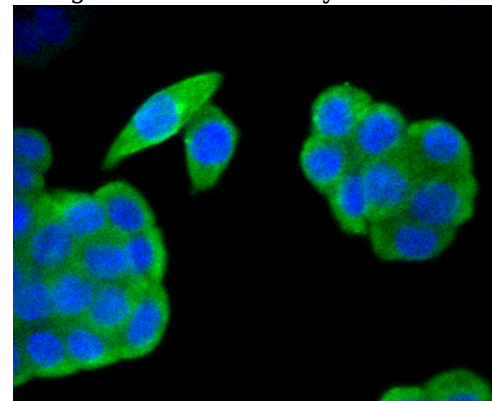


Immunofluorescence - HAPLN1 Monoclonal Antibody

Immunofluorescence analysis of HUVEC cells using HAPLN1 antibody .

Immunohistochemistry - HAPLN1 Monoclonal Antibody

Immunohistochemistry of paraffin-embedded human spleen using HAPLN1 antibody at dilution of 1:100 (40x lens).



Immunofluorescence - HAPLN1 Monoclonal Antibody

Immunofluorescence analysis of SW480 cells

HAPLN1 Monoclonal Antibody



Catalog Number: 160633

using HAPLN1 antibody .