

PCDH20 Polyclonal Antibody



Catalog Number: 160481

Product name

Rabbit IgG

PCDH20 Polyclonal Antibody

Applications

Specificity

WB

Human, Mouse, Rat

Dilutions

Antibody description

WB 1:500 - 1:2000

Polyclonal antibody to PCDH20

Preparation

Antigen: Recombinant fusion protein containing a sequence corresponding to amino acids 730-885 of human PCDH20 (NP_073754.2).

Formulation

PBS with 0.02% sodium azide, 50% glycerol, pH7.3.

Storage

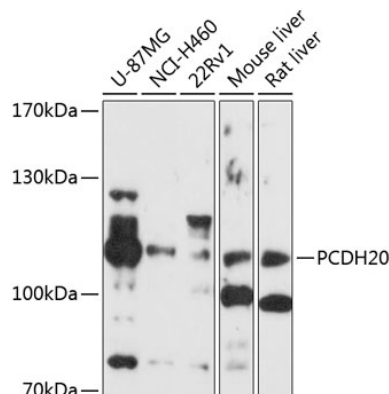
Store at -20°C. Avoid freeze / thaw cycles.

Clonality

Polyclonal

Ig Type

Validations



Western blot - PCDH20 Polyclonal Antibody

Western blot analysis of extracts of various cell lines, using PCDH20 antibody at 1:1000 dilution. Secondary antibody: HRP Goat Anti-Rabbit IgG (H+L) at 1:10000 dilution. Lysates/proteins: 25ug per lane. Blocking buffer: 3% nonfat dry milk in TBST. Detection: ECL Enhanced Kit. Exposure time: 90s.