

KLHL42 Polyclonal Antibody



Catalog Number: 160454

Product name

KLHL42 Polyclonal Antibody

Specificity

Human, Mouse

Antibody description

Polyclonal antibody to KLHL42

Preparation

Antigen: Recombinant fusion protein containing a sequence corresponding to amino acids 206-505 of human KLHL42 (NP_065833.1).

Formulation

PBS with 0.02% sodium azide, 50% glycerol, pH7.3.

Storage

Store at -20°C. Avoid freeze / thaw cycles.

Clonality

Polyclonal

Ig Type

Rabbit IgG

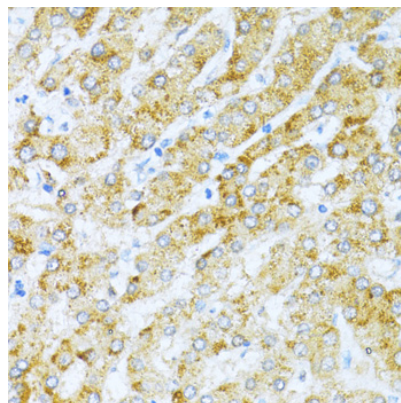
Applications

IHC

Dilutions

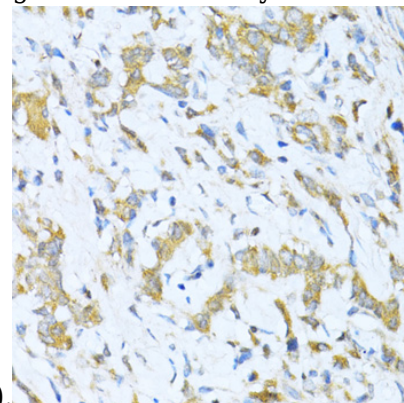
IHC 1:50 - 1:200

Validations



Immunohistochemistry - KLHL42 Polyclonal Antibody

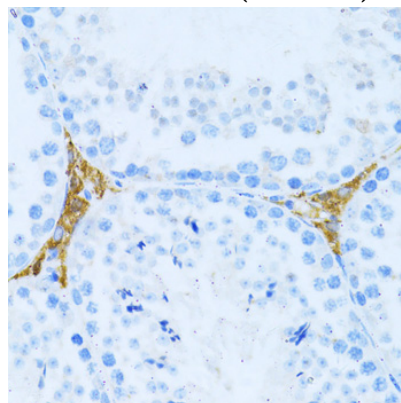
Immunohistochemistry of paraffin-embedded human liver using KLHL42 antibody at dilution of



1:100 (40x lens).

Immunohistochemistry - KLHL42 Polyclonal Antibody

Immunohistochemistry of paraffin-embedded human gastric cancer using KLHL42 antibody at dilution of 1:100 (40x lens).



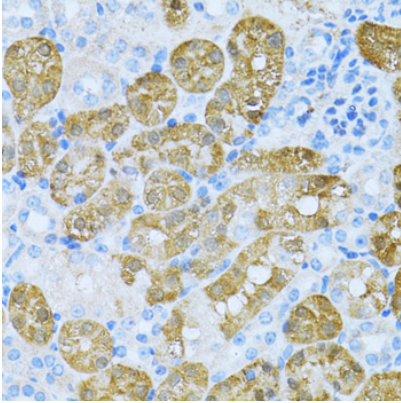
Immunohistochemistry - KLHL42 Polyclonal Antibody

KLHL42 Polyclonal Antibody



Catalog Number: 160454

Immunohistochemistry of paraffin-embedded mouse testis leydig using KLHL42 antibody at dilution of 1:100 (40x lens).



Immunohistochemistry - KLHL42 Polyclonal Antibody

Immunohistochemistry of paraffin-embedded mouse kidney using KLHL42 antibody at dilution of 1:100 (40x lens).