

# JPH4 Polyclonal Antibody



Catalog Number: 160426

## Product name

Rabbit IgG

JPH4 Polyclonal Antibody

## Applications

## Specificity

WB

Human, Mouse, Rat

## Dilutions

## Antibody description

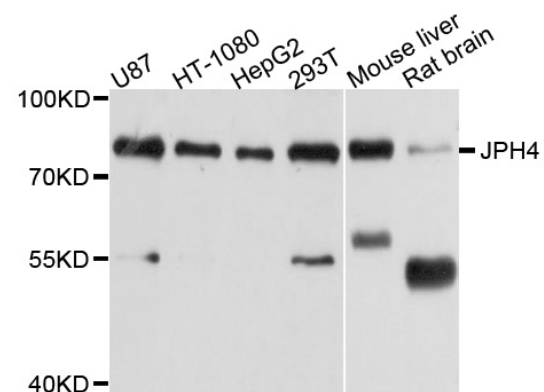
WB 1:500 - 1:2000

Polyclonal antibody to JPH4

## Validations

## Preparation

Antigen: Recombinant fusion protein containing a sequence corresponding to amino acids 405-605 of human JPH4 (NP\_115828.2).



## Formulation

PBS with 0.02% sodium azide, 50% glycerol, pH7.3.

Western blot - JPH4 Polyclonal Antibody

## Storage

Store at -20°C. Avoid freeze / thaw cycles.

Western blot analysis of extracts of various cell lines, using JPH4 antibody at 1:1000 dilution. Secondary antibody: HRP Goat Anti-Rabbit IgG (H+L) at 1:10000 dilution. Lysates/proteins: 25ug per lane. Blocking buffer: 3% nonfat dry milk in TBST. Detection: ECL Basic Kit. Exposure time: 10s.

## Clonality

Polyclonal

## Ig Type