

# KIF14 Polyclonal Antibody



Catalog Number: 160395

## Product name

KIF14 Polyclonal Antibody

## Specificity

Human, Mouse, Rat

## Antibody description

Polyclonal antibody to KIF14

## Preparation

Antigen: Recombinant fusion protein containing a sequence corresponding to amino acids 1399-1648 of human KIF14 (NP\_055690.1).

## Formulation

PBS with 0.02% sodium azide, 50% glycerol, pH7.3.

## Storage

Store at -20°C. Avoid freeze / thaw cycles.

## Clonality

Polyclonal

## Ig Type

Rabbit IgG

## Applications

WB, IHC, IF

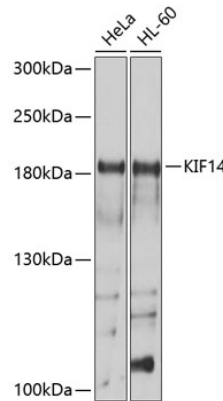
## Dilutions

WB 1:1000 - 1:2000

IHC 1:50 - 1:200

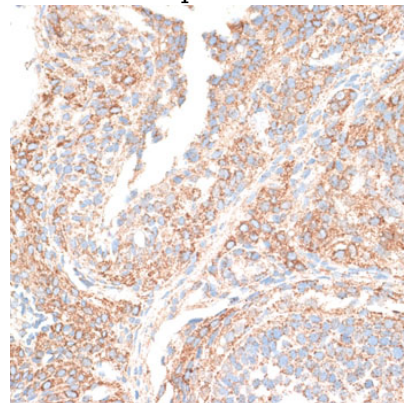
IF 1:50 - 1:200

## Validations



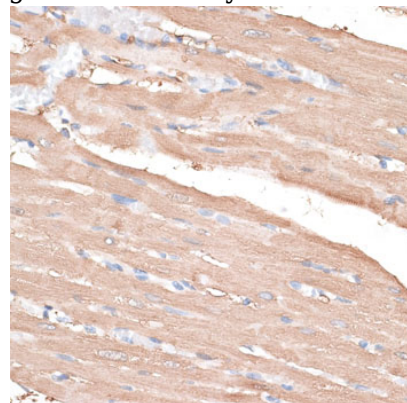
Western blot - KIF14 Polyclonal Antibody

Western blot analysis of extracts of various cell lines, using KIF14 antibody at 1:1000 dilution. Secondary antibody: HRP Goat Anti-Rabbit IgG (H+L) at 1:10000 dilution. Lysates/proteins: 25ug per lane. Blocking buffer: 3% nonfat dry milk in TBST. Detection: ECL Basic Kit. Exposure time: 15s.



Immunohistochemistry - KIF14 Polyclonal Antibody

Immunohistochemistry of paraffin-embedded rat ovary using KIF14 antibody at dilution of 1:100



(40x lens)...

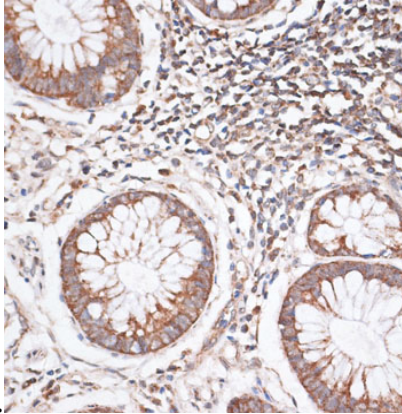
# KIF14 Polyclonal Antibody



Catalog Number: 160395

Immunohistochemistry - KIF14 Polyclonal Antibody

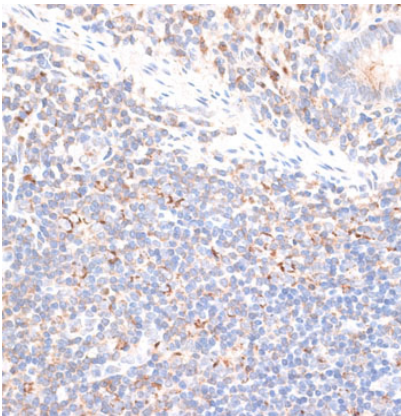
Immunohistochemistry of paraffin-embedded rat heart using KIF14 antibody at dilution of 1:100



(40x lens).

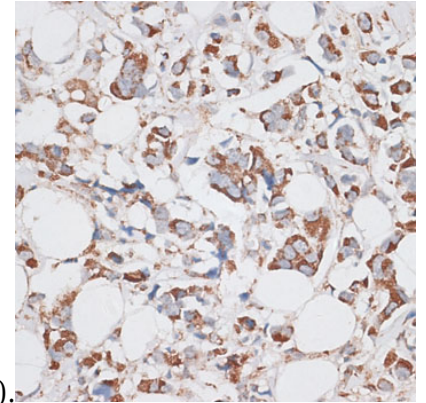
Immunohistochemistry - KIF14 Polyclonal Antibody

Immunohistochemistry of paraffin-embedded human colon carcinoma using KIF14 antibody at dilution of 1:100 (40x lens).



Immunohistochemistry - KIF14 Polyclonal Antibody

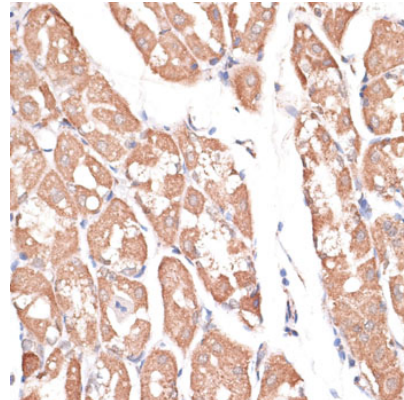
Immunohistochemistry of paraffin-embedded human appendix using KIF14 antibody at dilution



of 1:100 (40x lens).

Immunohistochemistry - KIF14 Polyclonal Antibody

Immunohistochemistry of paraffin-embedded human mammary cancer using KIF14 antibody at dilution of 1:100 (40x lens).



Immunohistochemistry - KIF14 Polyclonal Antibody

Immunohistochemistry of paraffin-embedded human stomach using KIF14 antibody at dilution of 1:100 (40x lens).