

SGK1 Polyclonal Antibody



Catalog Number: 160375

Product name

SGK1 Polyclonal Antibody

Specificity

Human, Mouse, Rat

Antibody description

Polyclonal antibody to SGK1

Preparation

Antigen: Recombinant fusion protein containing a sequence corresponding to amino acids 172-431 of human SGK1 (NP_005618.2).

Formulation

PBS with 0.02% sodium azide, 50% glycerol, pH7.3.

Storage

Store at -20°C. Avoid freeze / thaw cycles.

Clonality

Polyclonal

Ig Type

Rabbit IgG

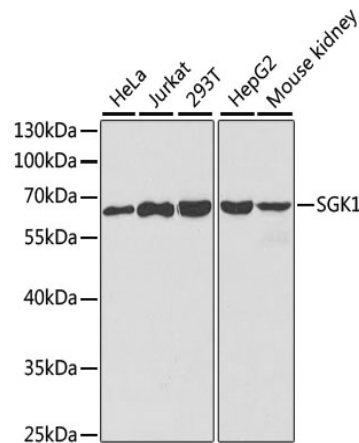
Applications

WB, IHC, IF

Dilutions

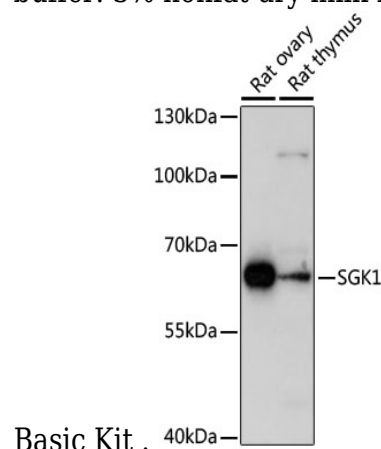
WB 1:500 - 1:2000
IHC 1:50 - 1:200
IF 1:50 - 1:200

Validations



Western blot - SGK1 Polyclonal Antibody

Western blot analysis of extracts of various cell lines, using SGK1 antibody at 1:1000 dilution. Secondary antibody: HRP Goat Anti-Rabbit IgG (H+L) at 1:10000 dilution. Lysates/proteins: 25ug per lane. Blocking buffer: 3% nonfat dry milk in TBST. Detection: ECL

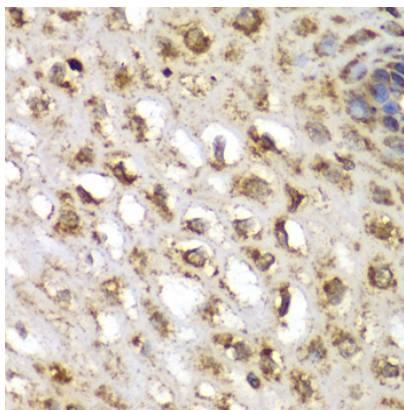


Western blot - SGK1 Polyclonal Antibody

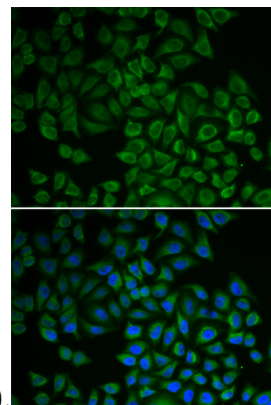
Western blot analysis of extracts of various cell lines, using SGK1 antibody at 1:1000 dilution. Secondary antibody: HRP Goat Anti-Rabbit IgG (H+L) at 1:10000 dilution. Lysates/proteins: 25ug per lane. Blocking buffer: 3% nonfat dry milk in TBST. Detection: ECL Enhanced Kit. Exposure time: 300s.

SGK1 Polyclonal Antibody

Catalog Number: 160375



of 1:100 (40x lens).



Immunohistochemistry - SGK1 Polyclonal Antibody

Immunofluorescence - SGK1 Polyclonal Antibody

Immunohistochemistry of paraffin-embedded human esophagus using SGK1 antibody at dilution

Immunofluorescence analysis of HeLa cells using SGK1 antibody . Blue: DAPI for nuclear staining.