

SLC25A1 Polyclonal Antibody



Catalog Number: 160372

Product name

SLC25A1 Polyclonal Antibody

Specificity

Human, Mouse, Rat

Antibody description

Polyclonal antibody to SLC25A1

Preparation

Antigen: Recombinant fusion protein containing a sequence corresponding to amino acids 1-311 of human SLC25A1 (NP_005975.1).

Formulation

PBS with 0.02% sodium azide, 50% glycerol, pH7.3.

Storage

Store at -20°C. Avoid freeze / thaw cycles.

Clonality

Polyclonal

Ig Type

Rabbit IgG

Applications

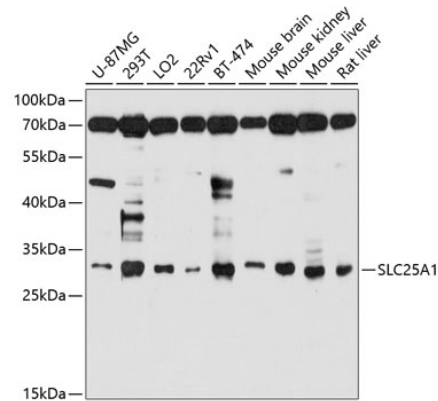
WB, IHC

Dilutions

WB 1:200 - 1:2000

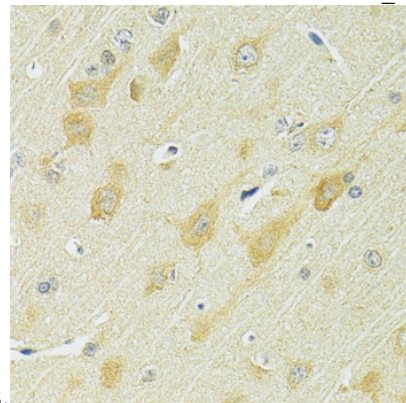
IHC 1:50 - 1:200

Validations



Western blot - SLC25A1 Polyclonal Antibody

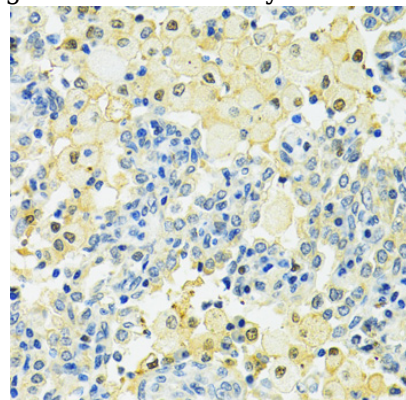
Western blot analysis of extracts of various cell lines, using SLC25A1 antibody at 1:1000 dilution. Secondary antibody: HRP Goat Anti-Rabbit IgG (H+L) at 1:10000 dilution. Lysates/proteins: 25ug per lane. Blocking buffer: 3% nonfat dry milk in TBST. Detection: ECL Enhanced Kit. Exposure



time: 30s.

Immunohistochemistry - SLC25A1 Polyclonal Antibody

Immunohistochemistry of paraffin-embedded rat brain using SLC25A1 antibody at dilution of 1:100



(40x lens).

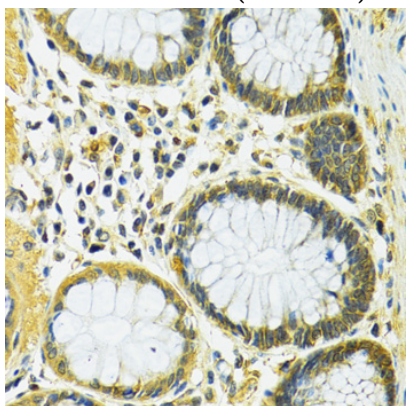
SLC25A1 Polyclonal Antibody



Catalog Number: 160372

Immunohistochemistry - SLC25A1 Polyclonal Antibody

Immunohistochemistry of paraffin-embedded human lung cancer using SLC25A1 antibody at dilution of 1:100 (40x lens).



Immunohistochemistry - SLC25A1 Polyclonal Antibody

Immunohistochemistry of paraffin-embedded human colon using SLC25A1 antibody at dilution of 1:100 (40x lens).