

# GPER1 Polyclonal Antibody

Catalog Number: 160352

## Product name

GPER1 Polyclonal Antibody

## Specificity

Human, Mouse, Rat

## Antibody description

Polyclonal antibody to GPER1

## Preparation

Antigen: Recombinant fusion protein containing a sequence corresponding to amino acids 1-70 of human GPER1 (NP\_001496.1).

## Formulation

PBS with 0.02% sodium azide, 50% glycerol, pH7.3.

## Storage

Store at -20°C. Avoid freeze / thaw cycles.

## Clonality

Polyclonal

## Ig Type

Rabbit IgG

## Applications

WB, IHC, IF

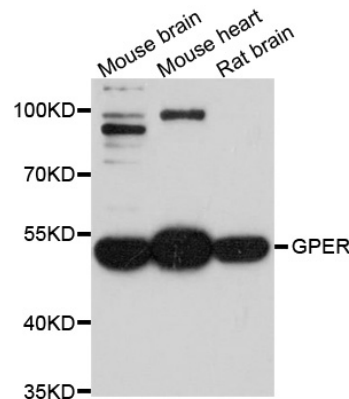
## Dilutions

WB 1:500 - 1:2000

IHC 1:50 - 1:200

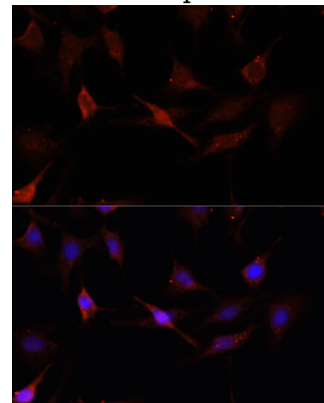
IF 1:50 - 1:200

## Validations



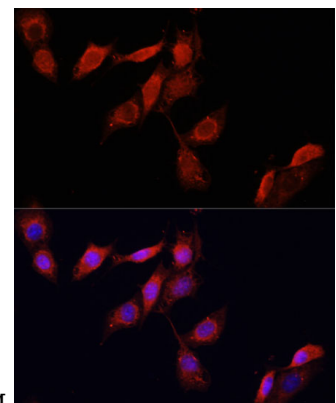
Western blot - GPER1 Polyclonal Antibody

Western blot analysis of extracts of various cell lines, using GPER1 antibody at 1:1000 dilution. Secondary antibody: HRP Goat Anti-Rabbit IgG (H+L) at 1:10000 dilution. Lysates/proteins: 25ug per lane. Blocking buffer: 3% nonfat dry milk in TBST. Detection: ECL Basic Kit. Exposure time: 90s.



Immunofluorescence - GPER1 Polyclonal Antibody

Immunofluorescence analysis of C6 cells using GPER1 antibody at dilution of 1:100. Blue: DAPI



for nuclear staining.

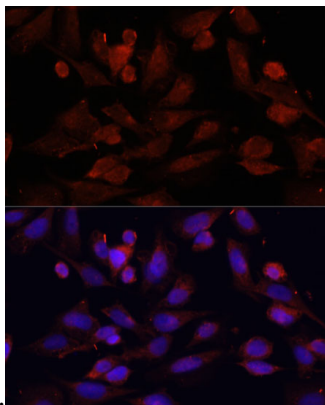
# GPER1 Polyclonal Antibody

Catalog Number: 160352

---

## Immunofluorescence - GPER1 Polyclonal Antibody

Immunofluorescence analysis of NIH/3T3 cells using GPER1 antibody at dilution of 1:100. Blue:



DAPI for nuclear staining.

## Immunofluorescence - GPER1 Polyclonal Antibody

Immunofluorescence analysis of U2OS cells using GPER1 antibody at dilution of 1:100. Blue: DAPI for nuclear staining.