

CLDN5 Polyclonal Antibody



Catalog Number: 160350

Product name

CLDN5 Polyclonal Antibody

Specificity

Human, Mouse, Rat

Antibody description

Polyclonal antibody to CLDN5

Preparation

Antigen: Recombinant fusion protein containing a sequence corresponding to amino acids 230-303 of human CLDN5 (NP_001124333.1).

Formulation

PBS with 0.02% sodium azide, 50% glycerol, pH7.3.

Storage

Store at -20°C. Avoid freeze / thaw cycles.

Clonality

Polyclonal

Ig Type

Rabbit IgG

Applications

WB, IHC, IF

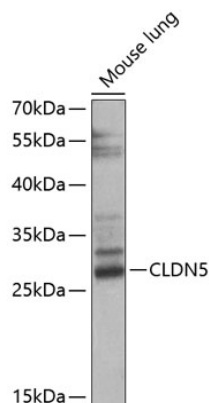
Dilutions

WB 1:500 - 1:2000

IHC 1:50 - 1:200

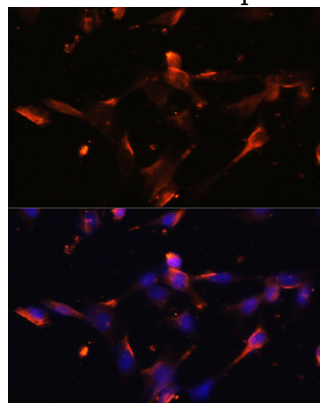
IF 1:50 - 1:200

Validations



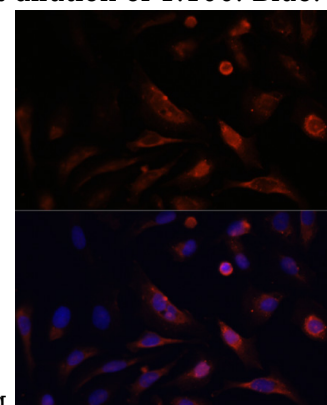
Western blot - CLDN5 Polyclonal Antibody

Western blot analysis of extracts of mouse lung, using CLDN5 antibody at 1:1000 dilution. Secondary antibody: HRP Goat Anti-Rabbit IgG (H+L) at 1:10000 dilution. Lysates/proteins: 25ug per lane. Blocking buffer: 3% nonfat dry milk in TBST. Detection: ECL Enhanced Kit. Exposure time: 60s.



Immunofluorescence - CLDN5 Polyclonal Antibody

Immunofluorescence analysis of NIH/3T3 cells using CLDN5 antibody at dilution of 1:100. Blue:



DAPI for nuclear staining.

CLDN5 Polyclonal Antibody



Catalog Number: 160350

Immunofluorescence - CLDN5 Polyclonal Antibody
Immunofluorescence analysis of U2OS cells using

CLDN5 antibody at dilution of 1:100. Blue: DAPI
for nuclear staining.