

# CLUH Polyclonal Antibody



Catalog Number: 160316

## Product name

CLUH Polyclonal Antibody

## Specificity

Human, Mouse

## Antibody description

Polyclonal antibody to CLUH

## Preparation

Antigen: Recombinant fusion protein containing a sequence corresponding to amino acids 1120-1309 of human CLUH (NP\_056044.3).

## Formulation

PBS with 0.02% sodium azide, 50% glycerol, pH7.3.

## Storage

Store at -20°C. Avoid freeze / thaw cycles.

## Clonality

Polyclonal

## Ig Type

Rabbit IgG

## Applications

WB, IHC, IF

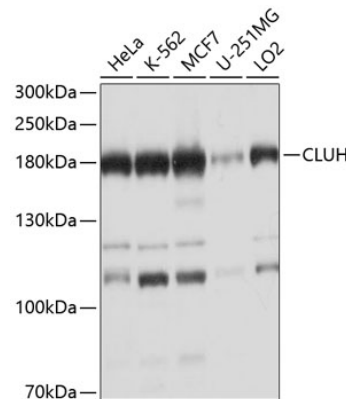
## Dilutions

WB 1:1000 - 1:4000

IHC 1:50 - 1:200

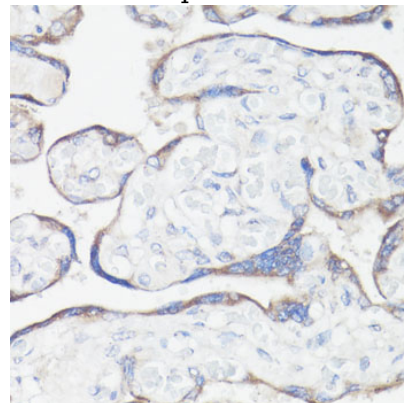
IF 1:50 - 1:200

## Validations



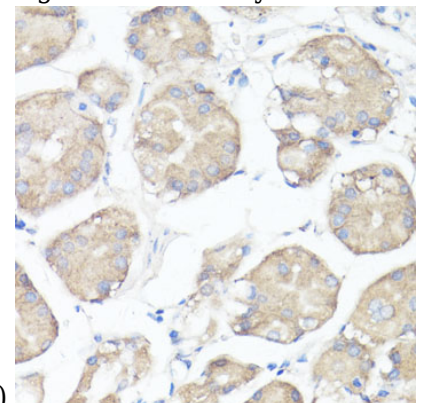
Western blot - CLUH Polyclonal Antibody

Western blot analysis of extracts of various cell lines, using CLUH antibody at 1:1000 dilution. Secondary antibody: HRP Goat Anti-Rabbit IgG (H+L) at 1:10000 dilution. Lysates/proteins: 25ug per lane. Blocking buffer: 3% nonfat dry milk in TBST. Detection: ECL Basic Kit. Exposure time: 15s.



Immunohistochemistry - CLUH Polyclonal Antibody

Immunohistochemistry of paraffin-embedded human placenta using CLUH antibody at dilution



of 1:100 (40x lens).

# CLUH Polyclonal Antibody

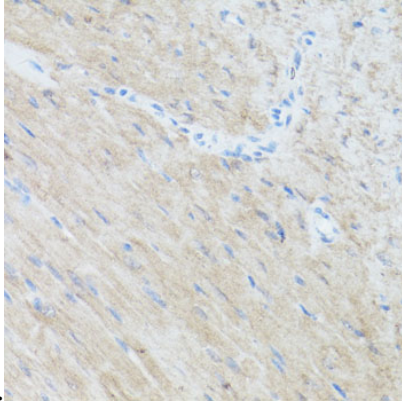


Catalog Number: 160316

---

## Immunohistochemistry - CLUH Polyclonal Antibody

Immunohistochemistry of paraffin-embedded human stomach using CLUH antibody at dilution



of 1:100 (40x lens).

## Immunohistochemistry - CLUH Polyclonal Antibody

Immunohistochemistry of paraffin-embedded mouse heart using CLUH antibody at dilution of 1:100 (40x lens).