

# ADAM22 Polyclonal Antibody



Catalog Number: 160229

## Product name

ADAM22 Polyclonal Antibody

## Specificity

Human, Mouse, Rat

## Antibody description

Polyclonal antibody to ADAM22

## Preparation

Antigen: Recombinant fusion protein containing a sequence corresponding to amino acids 223-400 of human ADAM22 (NP\_004185.1).

## Formulation

PBS with 0.02% sodium azide, 50% glycerol, pH7.3.

## Storage

Store at -20°C. Avoid freeze / thaw cycles.

## Clonality

Polyclonal

## Ig Type

Rabbit IgG

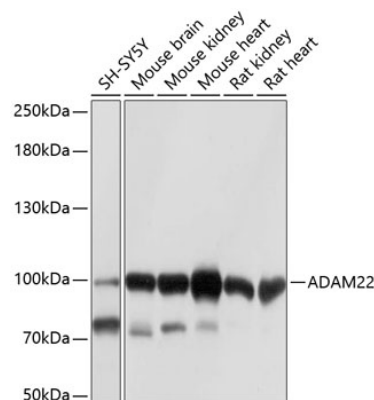
## Applications

WB

## Dilutions

WB 1:1000 - 1:4000

## Validations



Western blot - ADAM22 Polyclonal Antibody

Western blot analysis of extracts of various cell lines, using ADAM22 antibody at 1:1000 dilution. Secondary antibody: HRP Goat Anti-Rabbit IgG (H+L) at 1:10000 dilution. Lysates/proteins: 25ug per lane. Blocking buffer: 3% nonfat dry milk in TBST. Detection: ECL Basic Kit. Exposure time: 1s.