

# ID2 Polyclonal Antibody



Catalog Number: 160205

## Product name

ID2 Polyclonal Antibody

## Specificity

Human, Mouse, Rat

## Antibody description

Polyclonal antibody to ID2

## Preparation

Antigen: Recombinant fusion protein containing a sequence corresponding to amino acids 75-134 of human ID2 (NP\_002157.2).

## Formulation

PBS with 0.02% sodium azide, 50% glycerol, pH7.3.

## Storage

Store at -20°C. Avoid freeze / thaw cycles.

## Clonality

Polyclonal

## Ig Type

Rabbit IgG

## Applications

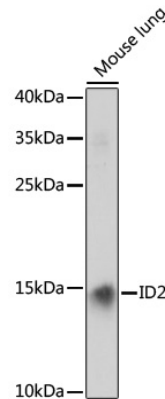
WB, IHC

## Dilutions

WB 1:500 - 1:2000

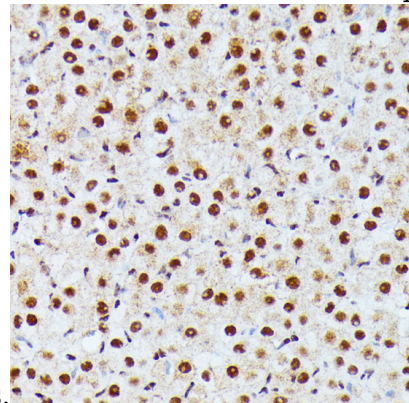
IHC 1:50 - 1:200

## Validations



Western blot - ID2 Polyclonal Antibody

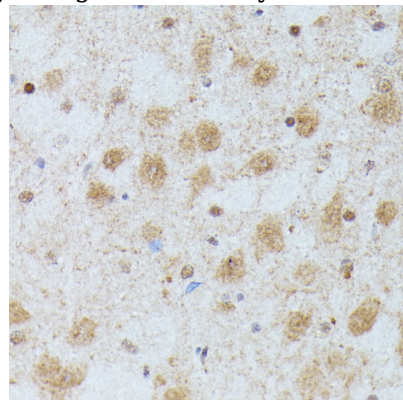
Western blot analysis of extracts of mouse lung, using ID2 antibody at 1:1000 dilution. Secondary antibody: HRP Goat Anti-Rabbit IgG (H+L) at 1:10000 dilution. Lysates/proteins: 25ug per lane. Blocking buffer: 3% nonfat dry milk in TBST. Detection: ECL Enhanced Kit. Exposure



time: 90s.

Immunohistochemistry - ID2 Polyclonal Antibody

Immunohistochemistry of paraffin-embedded rat ovary using ID2 antibody at dilution of 1:100 (40x



lens).

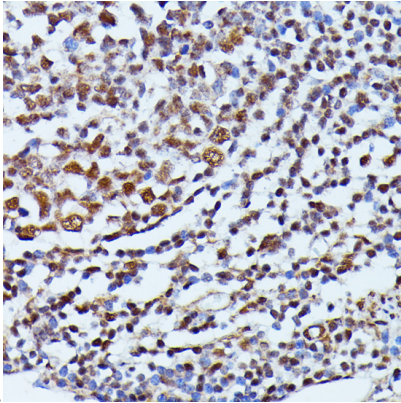
Immunohistochemistry - ID2 Polyclonal Antibody

# ID2 Polyclonal Antibody

Catalog Number: 160205

---

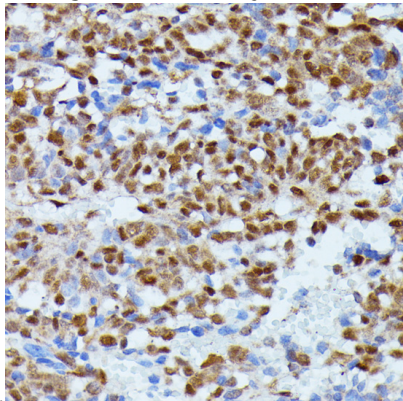
Immunohistochemistry of paraffin-embedded rat brain using ID2 antibody at dilution of 1:100 (40x



lens).

Immunohistochemistry - ID2 Polyclonal Antibody

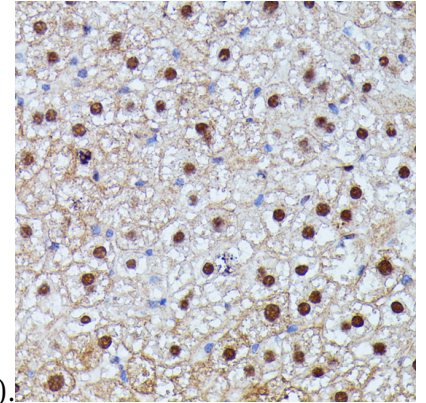
Immunohistochemistry of paraffin-embedded human appendix using ID2 antibody at dilution of



1:100 (40x lens).

Immunohistochemistry - ID2 Polyclonal Antibody

Immunohistochemistry of paraffin-embedded human oophoroma using ID2 antibody at dilution



of 1:100 (40x lens).

Immunohistochemistry - ID2 Polyclonal Antibody

Immunohistochemistry of paraffin-embedded mouse liver using ID2 antibody at dilution of 1:100 (40x lens).