

PI3 Kinase p110 beta Polyclonal Antibody



Catalog Number: 160199

Product name

PI3 Kinase p110 beta Polyclonal Antibody

Specificity

Human, Mouse, Rat

Antibody description

Polyclonal antibody to PI3 Kinase p110 beta

Preparation

Antigen: Recombinant fusion protein containing a sequence corresponding to amino acids 771-1070 of human PI3 Kinase p110 beta (NP_006210.1).

Formulation

PBS with 0.02% sodium azide, 50% glycerol, pH7.3.

Storage

Store at -20°C. Avoid freeze / thaw cycles.

Clonality

Polyclonal

Ig Type

Rabbit IgG

Applications

WB, IHC, IF

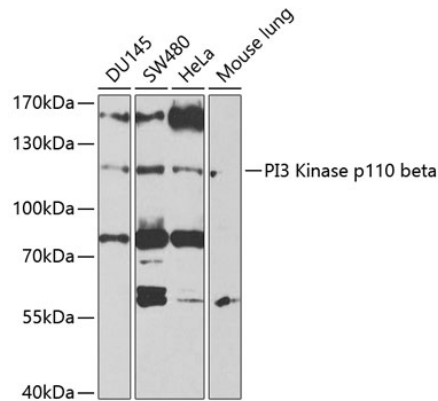
Dilutions

WB 1:500 - 1:2000

IHC 1:50 - 1:100

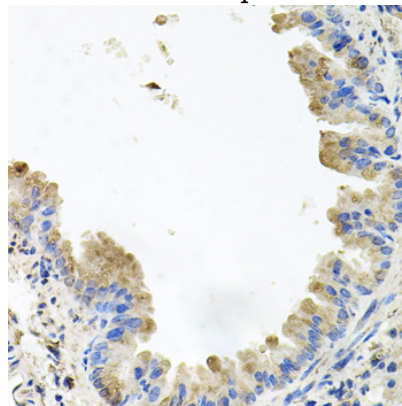
IF 1:50 - 1:100

Validations



Western blot - PI3 Kinase p110 beta Polyclonal Antibody

Western blot analysis of extracts of various cell lines, using PI3 Kinase p110 beta antibody at 1:1000 dilution. Secondary antibody: HRP Goat Anti-Rabbit IgG (H+L) at 1:10000 dilution. Lysates/proteins: 25ug per lane. Blocking buffer: 3% nonfat dry milk in TBST. Detection: ECL Enhanced Kit. Exposure time: 90s.



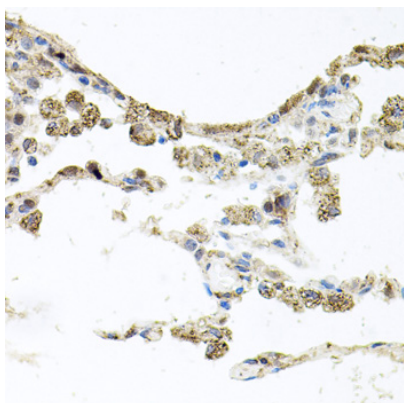
Immunohistochemistry - PI3 Kinase p110 beta Polyclonal Antibody

Immunohistochemistry of paraffin-embedded mouse lung using PI3 Kinase p110 beta antibody at dilution of 1:100 (40x lens).

PI3 Kinase p110 beta Polyclonal Antibody

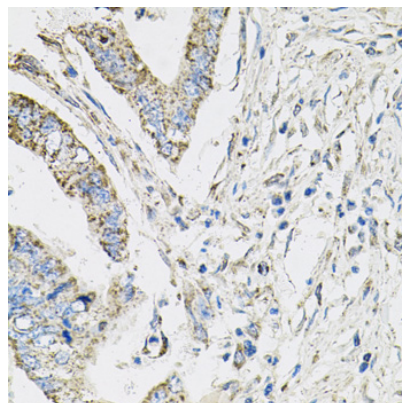


Catalog Number: 160199



Immunohistochemistry - PI3 Kinase p110 beta Polyclonal Antibody

Immunohistochemistry of paraffin-embedded human lung using PI3 Kinase p110 beta antibody at dilution of 1:100 (40x lens).



Immunohistochemistry - PI3 Kinase p110 beta Polyclonal Antibody

Immunohistochemistry of paraffin-embedded human colon carcinoma using PI3 Kinase p110 beta antibody at dilution of 1:100 (40x lens).