

# CDCA8 Polyclonal Antibody

Catalog Number: 160128

## Product name

CDCA8 Polyclonal Antibody

## Specificity

Human, Mouse, Rat

## Antibody description

Polyclonal antibody to CDCA8

## Preparation

Antigen: Recombinant protein of human CDCA8

## Formulation

PBS with 0.02% sodium azide, 50% glycerol, pH7.3.

## Storage

Store at -20°C. Avoid freeze / thaw cycles.

## Clonality

Polyclonal

## Ig Type

Rabbit IgG

## Applications

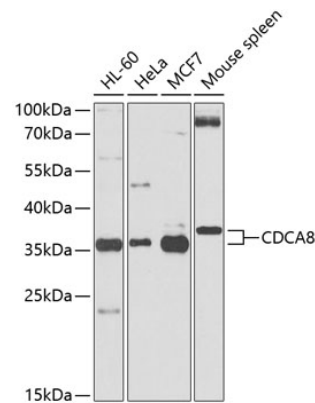
WB, IHC

## Dilutions

WB 1:500 - 1:2000

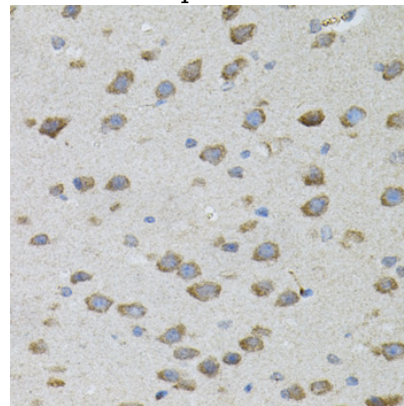
IHC 1:100 - 1:200

## Validations



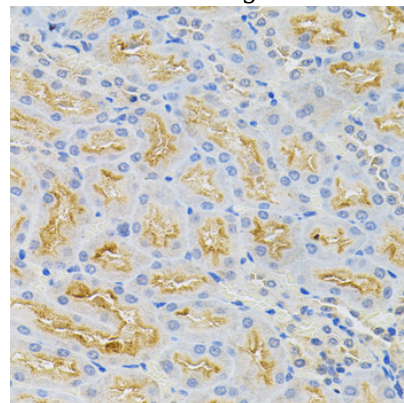
Western blot - CDCA8 Polyclonal Antibody

Western blot analysis of extracts of various cell lines, using CDCA8 antibody at 1:500 dilution. Secondary antibody: HRP Goat Anti-Rabbit IgG (H+L) at 1:10000 dilution. Lysates/proteins: 25ug per lane. Blocking buffer: 3% nonfat dry milk in TBST. Detection: ECL Basic Kit. Exposure time: 60s.



Immunohistochemistry - CDCA8 Polyclonal Antibody

Immunohistochemistry of paraffin-embedded mouse brain using CDCA8 antibody (40x lens).



# CDCA8 Polyclonal Antibody

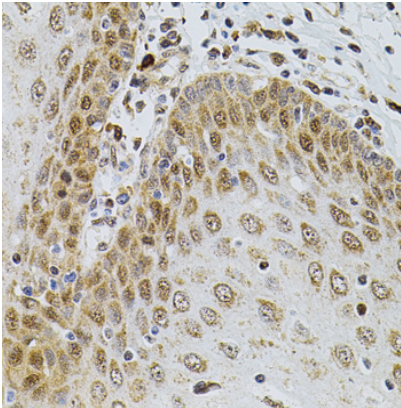


Catalog Number: 160128

---

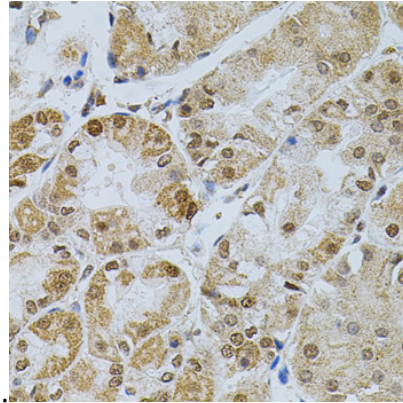
Immunohistochemistry - CDCA8 Polyclonal Antibody

Immunohistochemistry of paraffin-embedded rat kidney using CDCA8 antibody (40x lens).



Immunohistochemistry - CDCA8 Polyclonal Antibody

Immunohistochemistry of paraffin-embedded human esophagus using CDCA8 antibody (40x



lens).

Immunohistochemistry - CDCA8 Polyclonal Antibody

Immunohistochemistry of paraffin-embedded human stomach using CDCA8 antibody (40x lens).