

# ENDO G Polyclonal Antibody



Catalog Number: 160114

## Product name

ENDO G Polyclonal Antibody

## Specificity

Human, Mouse, Rat

## Antibody description

Polyclonal antibody to ENDOG

## Preparation

Antigen: Recombinant fusion protein containing a sequence corresponding to amino acids 49-297 of human ENDOG (NP\_004426.2).

## Formulation

PBS with 0.02% sodium azide, 50% glycerol, pH7.3.

## Storage

Store at -20°C. Avoid freeze / thaw cycles.

## Clonality

Polyclonal

## Ig Type

Rabbit IgG

## Applications

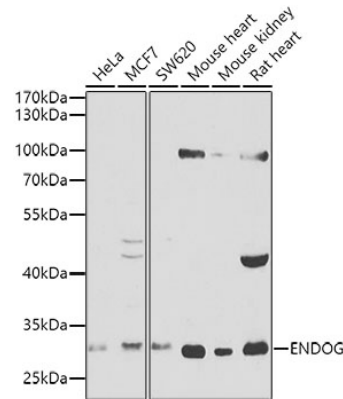
WB, IHC

## Dilutions

WB 1:200 - 1:500

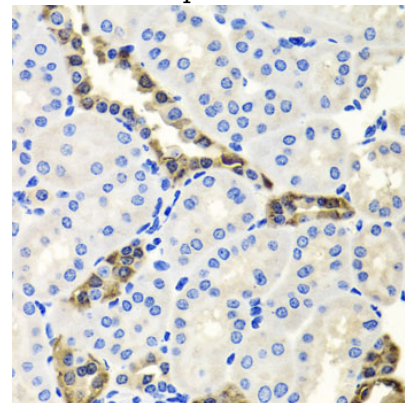
IHC 1:50 - 1:100

## Validations



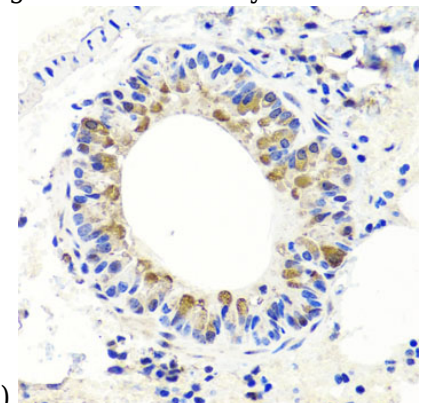
Western blot - ENDOG Polyclonal Antibody

Western blot analysis of extracts of various cell lines, using ENDOG antibody at 1:1000 dilution. Secondary antibody: HRP Goat Anti-Rabbit IgG (H+L) at 1:10000 dilution. Lysates/proteins: 25ug per lane. Blocking buffer: 3% nonfat dry milk in TBST. Detection: ECL Basic Kit. Exposure time: 90s.



Immunohistochemistry - ENDOG Polyclonal Antibody

Immunohistochemistry of paraffin-embedded mouse kidney using ENDOG antibody at dilution



of 1:100 (40x lens).

# ENDOG Polyclonal Antibody



Catalog Number: 160114

---

Immunohistochemistry - ENDOG Polyclonal Antibody

Immunohistochemistry of paraffin-embedded mouse lung using ENDOG antibody at dilution of 1:100 (40x lens).