

EIF3A Polyclonal Antibody



Catalog Number: 160108

Product name

EIF3A Polyclonal Antibody

Specificity

Human, Mouse, Rat

Antibody description

Polyclonal antibody to EIF3A

Preparation

Antigen: Recombinant fusion protein containing a sequence corresponding to amino acids 1-250 of human EIF3A (NP_003741.1).

Formulation

PBS with 0.02% sodium azide, 50% glycerol, pH7.3.

Storage

Store at -20°C. Avoid freeze / thaw cycles.

Clonality

Polyclonal

Ig Type

Rabbit IgG

Applications

WB, IHC, IF

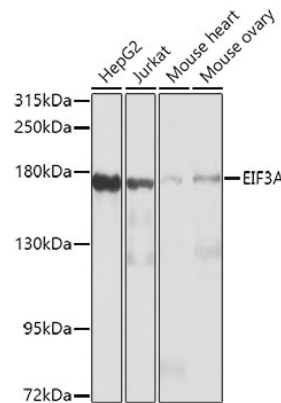
Dilutions

WB 1:500 - 1:1000

IHC 1:50 - 1:100

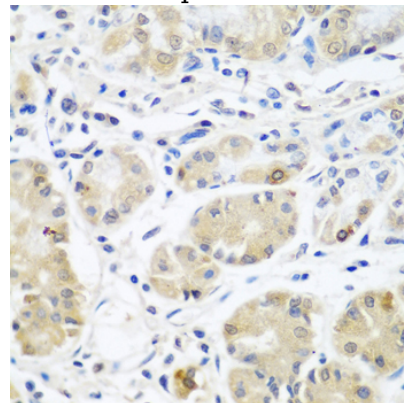
IF 1:50 - 1:100

Validations



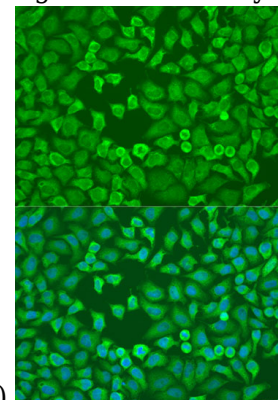
Western blot - EIF3A Polyclonal Antibody

Western blot analysis of extracts of various cell lines, using EIF3A antibody at 1:1000 dilution. Secondary antibody: HRP Goat Anti-Rabbit IgG (H+L) at 1:10000 dilution. Lysates/proteins: 25ug per lane. Blocking buffer: 3% nonfat dry milk in TBST. Detection: ECL Basic Kit. Exposure time: 30s.



Immunohistochemistry - EIF3A Polyclonal Antibody

Immunohistochemistry of paraffin-embedded human stomach using EIF3A antibody at dilution



of 1:100 (40x lens).

EIF3A Polyclonal Antibody



Catalog Number: 160108

Immunofluorescence - EIF3A Polyclonal Antibody
Immunofluorescence analysis of U2OS cells using

EIF3A antibody at dilution of 1:100. Blue: DAPI for nuclear staining.