

RIG-I / DDX58 Polyclonal Antibody



Catalog Number: 160102

Product name

RIG-I / DDX58 Polyclonal Antibody

Specificity

Human

Antibody description

Polyclonal antibody to RIG-I / DDX58

Preparation

Antigen: A synthetic peptide corresponding to a sequence within amino acids 830 to the C-terminus of human RIG-I / DDX58 (NP_055129.2).

Formulation

PBS with 0.02% sodium azide, 50% glycerol, pH7.3.

Storage

Store at -20°C. Avoid freeze / thaw cycles.

Clonality

Polyclonal

Ig Type

Rabbit IgG

Applications

WB, IHC, IF, IP

Dilutions

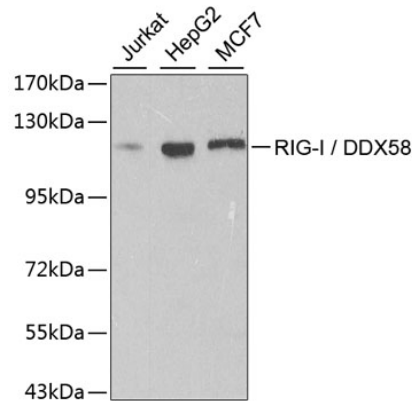
WB 1:500 - 1:2000

IHC 1:50 - 1:200

IF 1:20 - 1:100

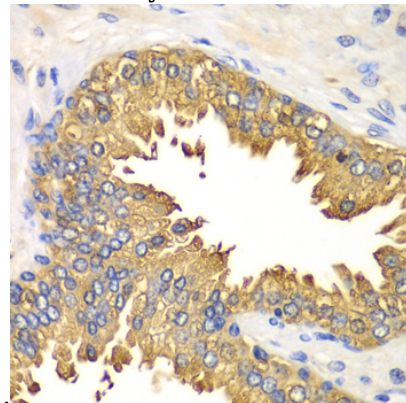
IP 1:20 - 1:100

Validations



Western blot - RIG-I / DDX58 Polyclonal Antibody

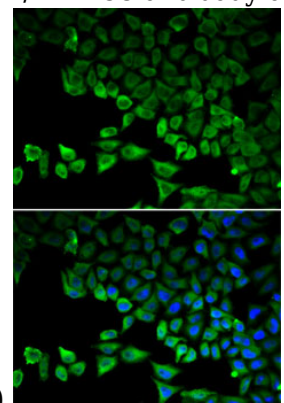
Western blot analysis of extracts of various cell lines, using RIG-I / DDX58 antibody at 1:500 dilution. Secondary antibody: HRP Goat Anti-Rabbit IgG (H+L) at 1:10000 dilution. Lysates/proteins: 25ug per lane. Blocking buffer: 3% nonfat dry milk in TBST. Detection: ECL



Basic Kit .

Immunohistochemistry - RIG-I / DDX58 Polyclonal Antibody

Immunohistochemistry of paraffin-embedded human prostate using RIG-I / DDX58 antibody at



dilution of 1:100 (40x lens).

RIG-I / DDX58 Polyclonal Antibody



Catalog Number: 160102

Immunofluorescence - RIG-I / DDX58 Polyclonal Antibody

Immunofluorescence analysis of HeLa cells using RIG-I / DDX58 antibody . Blue: DAPI for nuclear staining.