

# NUMA1 Polyclonal Antibody



Catalog Number: 160096

## Product name

NUMA1 Polyclonal Antibody

## Specificity

Human, Mouse, Rat

## Antibody description

Polyclonal antibody to NUMA1

## Preparation

Antigen: Recombinant fusion protein containing a sequence corresponding to amino acids 1-309 of human NUMA1 (NP\_006176.2).

## Formulation

PBS with 0.02% sodium azide, 50% glycerol, pH7.3.

## Storage

Store at -20°C. Avoid freeze / thaw cycles.

## Clonality

Polyclonal

## Ig Type

Rabbit IgG

## Applications

WB, IHC, IF

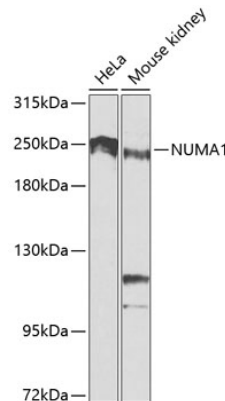
## Dilutions

WB 1:200 - 1:1000

IHC 1:50 - 1:100

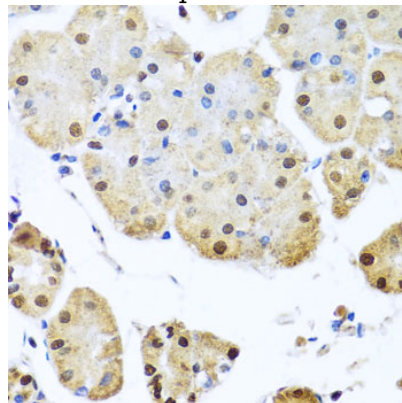
IF 1:50 - 1:100

## Validations



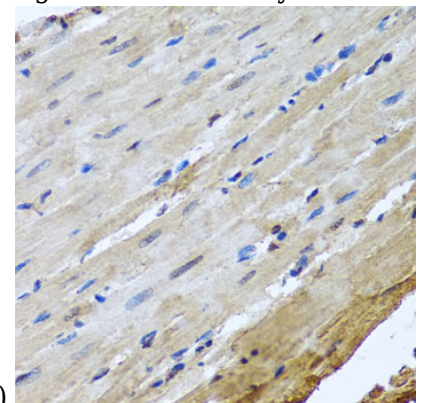
Western blot - NUMA1 Polyclonal Antibody

Western blot analysis of extracts of various cell lines, using NUMA1 antibody at 1:1000 dilution. Secondary antibody: HRP Goat Anti-Rabbit IgG (H+L) at 1:10000 dilution. Lysates/proteins: 25ug per lane. Blocking buffer: 3% nonfat dry milk in TBST. Detection: ECL Basic Kit. Exposure time: 90s.



Immunohistochemistry - NUMA1 Polyclonal Antibody

Immunohistochemistry of paraffin-embedded human stomach using NUMA1 antibody at dilution



of 1:100 (40x lens).

# NUMA1 Polyclonal Antibody

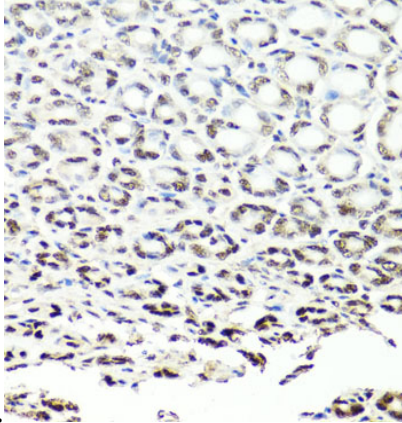


Catalog Number: 160096

---

Immunohistochemistry - NUMA1 Polyclonal Antibody

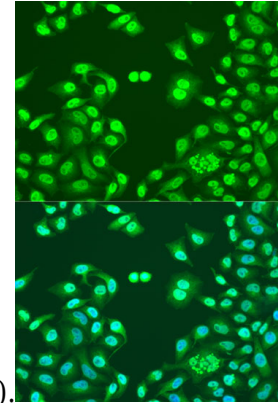
Immunohistochemistry of paraffin-embedded rat heart using NUMA1 antibody at dilution of 1:100



(40x lens).

Immunohistochemistry - NUMA1 Polyclonal Antibody

Immunohistochemistry of paraffin-embedded mouse stomach using NUMA1 antibody at dilution



of 1:100 (40x lens).

Immunofluorescence - NUMA1 Polyclonal Antibody

Immunofluorescence analysis of U2OS cells using NUMA1 antibody at dilution of 1:100. Blue: DAPI for nuclear staining.