

# RYR2 Polyclonal Antibody

Catalog Number: 160054

## Product name

RYR2 Polyclonal Antibody

## Specificity

Human, Mouse, Rat

## Antibody description

Polyclonal antibody to RYR2

## Preparation

Antigen: A synthetic peptide corresponding to a sequence within amino acids 4850-4950 of human RYR2 (NP\_001026.2).

## Formulation

PBS with 0.02% sodium azide, 50% glycerol, pH7.3.

## Storage

Store at -20°C. Avoid freeze / thaw cycles.

## Clonality

Polyclonal

## Ig Type

Rabbit IgG

## Applications

WB, IHC, IF

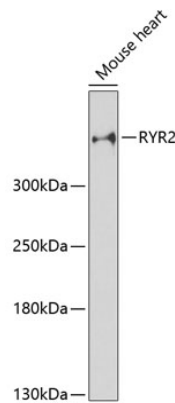
## Dilutions

WB 1:500 - 1:2000

IHC 1:50 - 1:200

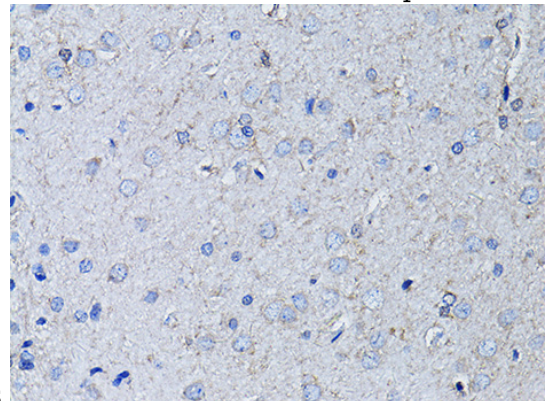
IF 1:50 - 1:200

## Validations



## Western blot - RYR2 Polyclonal Antibody

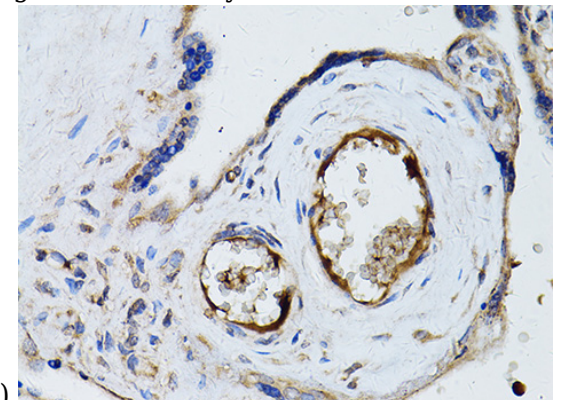
Western blot analysis of extracts of mouse heart, using RYR2 antibody at 1:3000 dilution. Secondary antibody: HRP Goat Anti-Rabbit IgG (H+L) at 1:10000 dilution. Lysates/proteins: 25ug per lane. Blocking buffer: 3% nonfat dry milk in TBST. Detection: ECL Enhanced Kit. Exposure



time: 90s.

## Immunohistochemistry - RYR2 Polyclonal Antibody

Immunohistochemistry of paraffin-embedded rat brain using RYR2 Antibody at dilution of 1:100



(40x lens).

## Immunohistochemistry - RYR2 Polyclonal Antibody

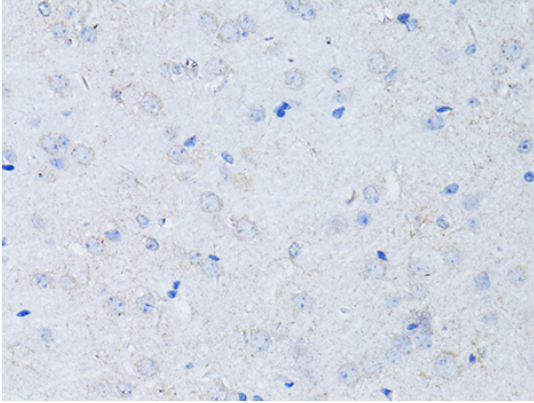
# RYR2 Polyclonal Antibody



Catalog Number: 160054

---

Immunohistochemistry of paraffin-embedded human placenta using RYR2 Antibody at dilution of 1:100 (40x lens).



Immunohistochemistry - RYR2 Polyclonal Antibody

Immunohistochemistry of paraffin-embedded mouse brain using RYR2 Antibody at dilution of 1:100 (40x lens).