

IKBKE Polyclonal Antibody



Catalog Number: 160043

Product name

IKBKE Polyclonal Antibody

Specificity

Human, Mouse, Rat

Antibody description

Polyclonal antibody to IKBKE

Preparation

Antigen: Recombinant fusion protein containing a sequence corresponding to amino acids 495-716 of human IKBKE (NP_054721.1).

Formulation

PBS with 0.02% sodium azide, 50% glycerol, pH7.3.

Storage

Store at -20°C. Avoid freeze / thaw cycles.

Clonality

Polyclonal

Ig Type

Rabbit IgG

Applications

WB, IHC, IF, IP

Dilutions

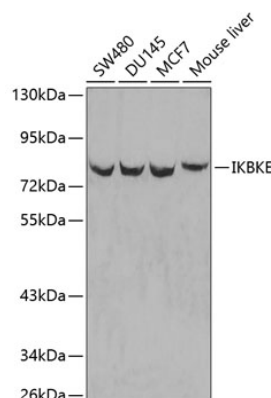
WB 1:500 - 1:2000

IHC 1:50 - 1:200

IF 1:50 - 1:200

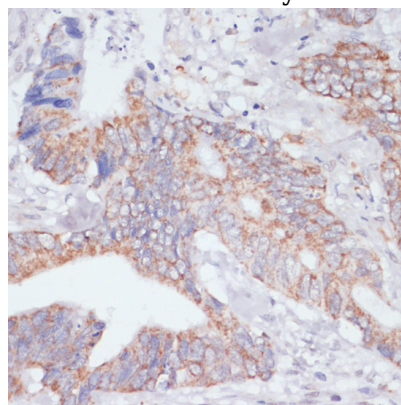
IP 1:50 - 1:200

Validations



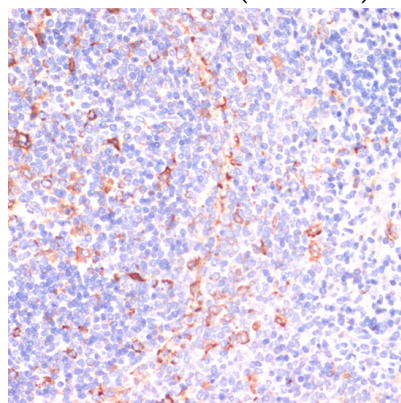
Western blot - IKBKE Polyclonal Antibody

Western blot analysis of extracts of various cell lines, using IKBKE antibody. Secondary antibody: HRP Goat Anti-Rabbit IgG (H+L) at 1:10000 dilution. Lysates/proteins: 25ug per lane. Blocking buffer: 3% nonfat dry milk in TBST.



Immunohistochemistry - IKBKE Polyclonal Antibody

Immunohistochemistry of paraffin-embedded human colon carcinoma using IKBKE antibody at dilution of 1:200 (40x lens).



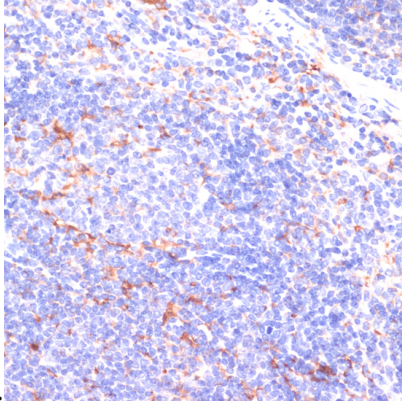
IKBKE Polyclonal Antibody



Catalog Number: 160043

Immunohistochemistry - IKBKE Polyclonal Antibody

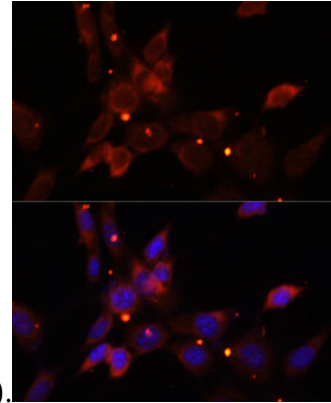
Immunohistochemistry of paraffin-embedded rat spleen using IKBKE antibody at dilution of 1:200



(40x lens).

Immunohistochemistry - IKBKE Polyclonal Antibody

Immunohistochemistry of paraffin-embedded mouse spleen using IKBKE antibody at dilution of



1:200 (40x lens).

Immunofluorescence - IKBKE Polyclonal Antibody

Immunofluorescence analysis of NIH/3T3 cells using IKBKE antibody at dilution of 1:100. Blue: DAPI for nuclear staining.