

LRP5 Polyclonal Antibody



Catalog Number: 160018

Product name

LRP5 Polyclonal Antibody

Specificity

Human, Mouse, Rat

Antibody description

Polyclonal antibody to LRP5

Preparation

Antigen: Recombinant fusion protein containing a sequence corresponding to amino acids 1000-1250 of human LRP5 (NP_002326.2).

Formulation

PBS with 0.02% sodium azide, 50% glycerol, pH7.3.

Storage

Store at -20°C. Avoid freeze / thaw cycles.

Clonality

Polyclonal

Ig Type

Rabbit IgG

Applications

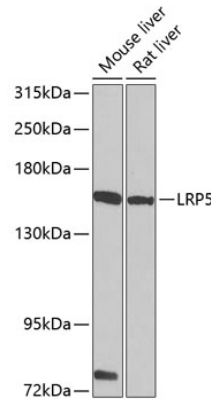
WB, IHC

Dilutions

WB 1:500 - 1:2000

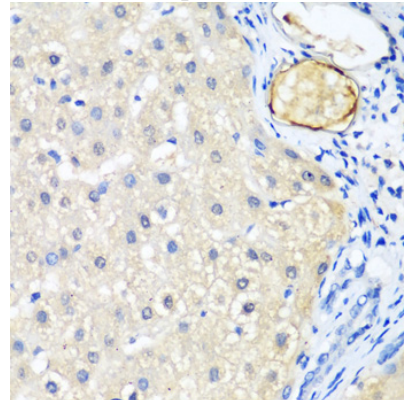
IHC 1:50 - 1:200

Validations



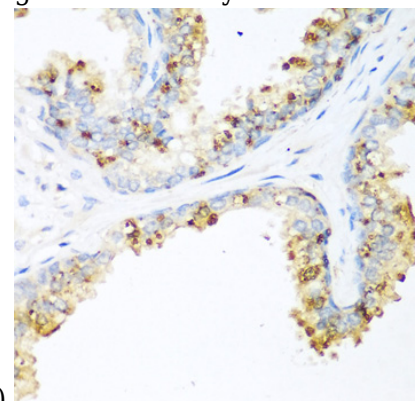
Western blot - LRP5 Polyclonal Antibody

Western blot analysis of extracts of various cell lines, using LRP5 antibody at 1:1000 dilution. Secondary antibody: HRP Goat Anti-Rabbit IgG (H+L) at 1:10000 dilution. Lysates/proteins: 25ug per lane. Blocking buffer: 3% nonfat dry milk in TBST. Detection: ECL Basic Kit. Exposure time: 90s.



Immunohistochemistry - LRP5 Polyclonal Antibody

Immunohistochemistry of paraffin-embedded human liver using LRP5 antibody at dilution of



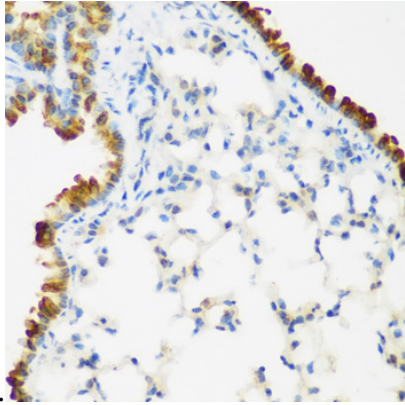
1:200 (40x lens).

LRP5 Polyclonal Antibody

Catalog Number: 160018

Immunohistochemistry - LRP5 Polyclonal Antibody

Immunohistochemistry of paraffin-embedded human prostate using LRP5 antibody at dilution of



1:200 (40x lens).

Immunohistochemistry - LRP5 Polyclonal Antibody

Immunohistochemistry of paraffin-embedded mouse lung using LRP5 antibody at dilution of 1:200 (40x lens).