

Anti-ADA antibody

Catalog Number: 142990

General Information

Product name:

Anti-ADA antibody

Immunogen:

Applications:

WB, ICC/IF, IF, IP

Specificity:

Human ADA / Adenosine deaminase

Antibody description:

Rabbit Polyclonal to Human ADA

Properties

Preparation:

Produced in rabbits immunized with a synthetic peptide corresponding to the C-terminus of the Human ADA / Adenosine deaminase, and purified by antigen affinity chromatography.

Formulation:

0.2 μ m filtered solution in PBS

Storage:

This antibody can be stored at 2°C-8°C for one month without detectable loss of activity. Antibody products are stable for twelve months from date of receipt when stored at -20°C to -80°C.

Preservative-Free.

Sodium azide is recommended to avoid contamination (final concentration 0.05%-0.1%). It is toxic to cells and should be disposed of properly. Avoid repeated freeze-thaw cycles.

Clonality:

Polyclonal

Ig Type:Rabbit IgG

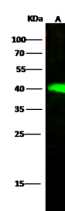
Applications

WB: 1-10 μ g/ml

ICC/IF: 0.5-1.5 μ g/mL

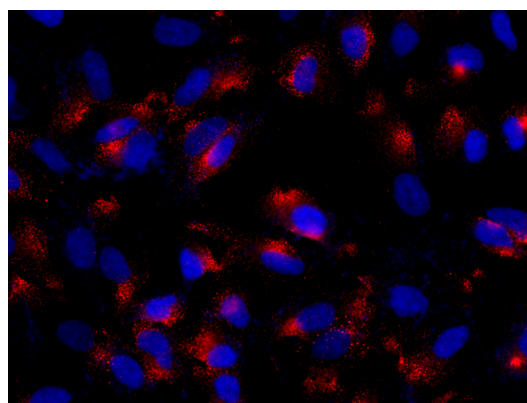
IP: 0.5-2 uL/mg of lysate

Validations



Items	Lanes
Sample (whole cell lysate)	A
Sample Volume (μ g/lane)	Jurkat
Sample Volume (μ g/lane)	30
Gel	13% SDS-PAGE reducing gel
Recommended Concentration	1-10 μ g/ml
Secondary Antibody	Dylight 800-labeled Antibody To Rabbit IgG (H+L), at 1:5000 dilution.
Developed using Odyssey imaging system.	
Explanation	Predicted band size : 41 kDa Observed band size : 40 kDa

ADA / Adenosine deaminase Antibody, Rabbit PAb, Antigen Affinity Purified, Western blot

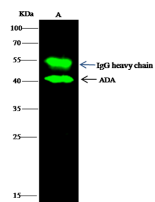


ADA / Adenosine deaminase Antibody, Rabbit PAb, Antigen Affinity Purified, Immunofluorescence

Anti-ADA antibody



Catalog Number: 142990



ADA / Adenosine deaminase Antibody, Rabbit PAb,
Antigen Affinity Purified, Immunoprecipitation

Lanes	A
Sample (whole cell lysate)	Jurkat
Sample quantity	0.5 mg
IP antibody quantity	2 µg
Protein G agarose	15 µl of 50% Protein G Agarose
Gel	13% SDS-PAGE reducing gel
Primary antibody	KLH-SMCC-sinoAK33 antibody at 10 µg/ml
Secondary antibody	DyLight 800-labeled antibody to rabbit IgG (1:1), at 1:5000 dilution