

Anti-MAG antibody



Catalog Number: 142979

Product name

Anti-MAG antibody

Immunogen

[Human MAG/GMA/Siglec-4 \(His Tag\) recombinant protein](#)

Specificity

Human MAG / GMA / Siglec-4

Antibody description

Rabbit Polyclonal to Human MAG

Preparation

Produced in rabbits immunized with purified, recombinant Human MAG / GMA / Siglec-4 . MAG / GMA / Siglec-4 specific IgG was purified by Human MAG / GMA / Siglec-4 affinity chromatography.

Formulation

0.2 µm filtered solution in PBS

Storage

This antibody can be stored at 2°C-8°C for one month without detectable loss of activity. Antibody products are stable for twelve months from date of receipt when stored at -20°C to -80°C. Preservative-Free.

Sodium azide is recommended to avoid contamination (final concentration 0.05%-0.1%). It is toxic to cells and should be disposed of properly. Avoid repeated freeze-thaw cycles.

Clonality

Polyclonal

Ig Type

Rabbit IgG

Applications

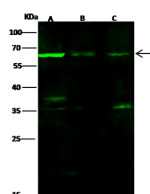
WB, ICC/IF, IF

Dilutions

WB: 10-20 µg/ml

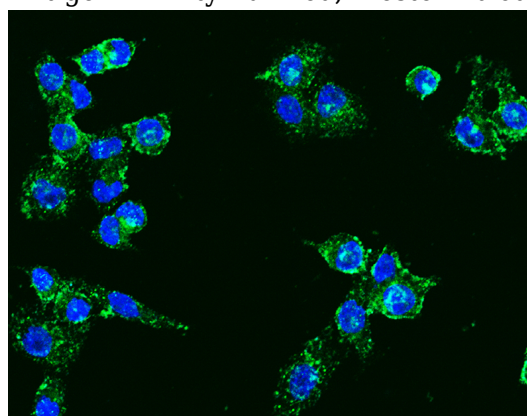
ICC/IF: 0.5-3 µg/mL

Validations



Lanes	A	B	C
Items			
Sample	Jurkat (Membrane lysate)	Rat brain tissue lysate	Mouse brain tissue lysate
Sample Volume (µg/lane)	30	30	30
Gel	13% SDS-PAGE reducing gel		
Recommended Concentration	10-20 µg/ml		
Secondary Antibody	Dylight 800-labeled Antibody to Rabbit IgG (H+L), at 1:5000 dilution.		
Developed using Odyssey imaging system.			
Explanation	Predicted band size : 53 kDa Observed band size : 62 kDa Additional bands at : 37 kDa and 35 kDa (We are unsure as to the identity of these extra bands.)		

MAG / GMA / Siglec-4 Antibody, Rabbit PAb, Antigen Affinity Purified, Western blot



MAG / GMA / Siglec-4 Antibody, Rabbit PAb, Antigen Affinity Purified, Immunofluorescence