

Anti-RAB6A antibody



Catalog Number: 142932

Product name

Anti-RAB6A antibody

Immunogen

[Human Rab6 / Rab GTPase / RAB6A \(His Tag\) recombinant protein](#)

Specificity

Human Rab6 / Rab GTPase / RAB6A

Antibody description

Rabbit Polyclonal to Human RAB6A

Preparation

Produced in rabbits immunized with purified, recombinant Human Rab6 / Rab GTPase / RAB6A . Rab6 / Rab GTPase / RAB6A specific IgG was purified by Human Rab6 / Rab GTPase / RAB6A affinity chromatography.

Formulation

0.2 µm filtered solution in PBS

Storage

This antibody can be stored at 2°C-8°C for one month without detectable loss of activity. Antibody products are stable for twelve months from date of receipt when stored at -20°C to -80°C.

Preservative-Free.

Sodium azide is recommended to avoid contamination (final concentration 0.05%-0.1%). It is toxic to cells and should be disposed of properly. Avoid repeated freeze-thaw cycles.

Clonality

Polyclonal

Ig Type

Rabbit IgG

Applications

WB, ELISA, ICC/IF, IF, IP

Dilutions

WB: 5-20 µg/ml

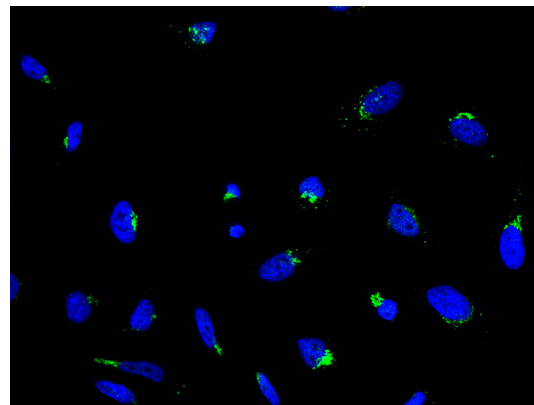
ELISA: 0.1-0.2 µg/mL

This antibody can be used at 0.1-0.2 µg/mL with the appropriate secondary reagents to detect Human Rab6 / Rab GTPase / RAB6A.

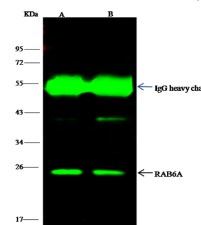
ICC/IF: 0.1-3µg/mL

IP: 1-4 µl/mg of lysate

Validations



Human Rab6 / Rab GTPase / RAB6A Immunofluorescence(IF) 15802



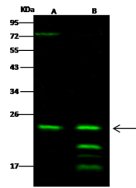
Items	A	B
Sample (whole cell lysate)	293T	HE69
Sample quantity	0.5 mg	
IP antibody quantity	4 µL	
Protein G agarose	15 µl of 50% Protein G Agarose	
Gel	13% SDS-PAGE reducing gel	
Primary antibody	His-RAB6A antibody at 10 µg/ml	
Secondary antibody	DyLight 800-labeled antibody to Rabbit IgG (H+L), at 1:5000 dilution	

Human Rab6 / Rab GTPase / RAB6A Immunoprecipitation(IP) 15803

Anti-RAB6A antibody



Catalog Number: 142932



Human Rab6 / Rab GTPase / RAB6A Western blot
(WB) 15801

Lanes	A	B
Items		
Sample (whole cell lysate)	NCI-H1299	H160
Sample Volume (µg/lane)	30	30
Gel	13% SDS-PAGE reducing gel	
Recommended Concentration	5-20 µg/ml	
Secondary Antibody	Dylight 800 labeled Antibody to Rabbit IgG (F11), at 1:5000 dilution	
Developed using Odyssey imaging system.		
Explanation	Predicted band size : 24 kDa Observed band size : 23 kDa Additional bands at : 16 kDa , 18 kDa , 20 kDa and 74 kDa (We are unsure as to the identity of these extra bands.)	