

# Anti-IL1RL1 antibody



Catalog Number: 142829

## Product name

Anti-IL1RL1 antibody

## Immunogen

[Mouse IL1RL1 \(His Tag\) recombinant protein](#)

## Specificity

Mouse IL1RL1 / IL-1 R4

## Antibody description

Rabbit Polyclonal to Mouse IL1RL1

## Preparation

Produced in rabbits immunized with purified, recombinant Mouse IL1RL1 / IL-1 R4 . IL1RL1 / IL-1 R4 specific IgG was purified by Mouse IL1RL1 / IL-1 R4 affinity chromatography.

## Formulation

0.2 µm filtered solution in PBS

## Storage

This antibody can be stored at 2°C-8°C for one month without detectable loss of activity. Antibody products are stable for twelve months from date of receipt when stored at -20°C to -80°C.

Preservative-Free.

Sodium azide is recommended to avoid contamination (final concentration 0.05%-0.1%). It is toxic to cells and should be disposed of properly. Avoid repeated freeze-thaw cycles.

## Clonality

Polyclonal

## Ig Type

Rabbit IgG

## Applications

WB, ELISA

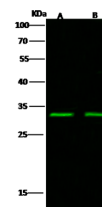
## Dilutions

WB: 5-20 µg/ml

ELISA: 0.1-0.2 µg/ml

This antibody can be used at 0.1-0.2 µg/ml with the appropriate secondary reagents to detect Mouse IL1RL1 / IL-1 R4.

## Validations



Items	Lanes	A	B
Sample (whole cell lysate)		Daudi	K562
Sample Volume (µg/lane)		30	30
Gel		13% SDS-PAGE reducing gel	
Recommended Concentration		5-20 µg/ml	
Secondary Antibody		Dylight 800-labeled Antibody To Rabbit IgG (H+), at 1:5000 dilution.	
Explanation		Developed using Odyssey imaging system. Predicted band size : 29 kDa Observed band size : 29 kDa	

IL1RL1 / IL-1 R4 Antibody, Rabbit PAb, Antigen Affinity Purified, Western blot