

Anti-YWHAE antibody

Catalog Number: 142734

Product name

Anti-YWHAE antibody

Immunogen

[Human 14-3-3 epsilon/YWHAE recombinant protein](#)

Specificity

Human 14-3-3 epsilon/YWHAE

Antibody description

Rabbit Polyclonal to Human YWHAE

Preparation

Produced in rabbits immunized with purified, recombinant Human 14-3-3 epsilon/YWHAE . 14-3-3 epsilon/YWHAE specific IgG was purified by Human 14-3-3 epsilon/YWHAE affinity chromatography.

Formulation

0.2 µm filtered solution in PBS

Storage

This antibody can be stored at 2°C-8°C for one month without detectable loss of activity. Antibody products are stable for twelve months from date of receipt when stored at -20°C to -80°C.

Preservative-Free.

Sodium azide is recommended to avoid contamination (final concentration 0.05%-0.1%). It is toxic to cells and should be disposed of properly. Avoid repeated freeze-thaw cycles.

Clonality

Polyclonal

Ig Type

Rabbit IgG

Applications

WB, ELISA, ICC/IF, IF, IP

Dilutions

WB: 1-5 µg/ml

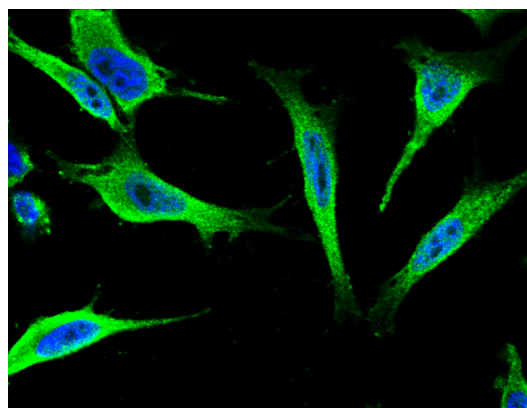
ELISA: 0.1-0.2 µg/mL

This antibody can be used at 0.1-0.2 µg/mL with the appropriate secondary reagents to detect Human 14-3-3 epsilon/YWHAE.

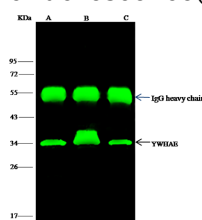
ICC/IF: 0.5-3µg/mL

IP: 1-4 µl/mg of lysate

Validations



Human 14-3-3 epsilon/YWHAE Immunofluorescence(IF) 15721



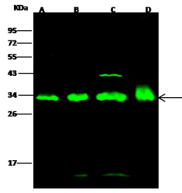
Item	Lanes	A	B	C
Sample (whole cell lysate)		Jurkat	HepG2	SH-SY5Y
Sample quantity		0.5 mg		
IP antibody quantity		4 µL		
Protein G agarose		15 µl of 50% Protein G Agarose		
Clot		1.5% SDS-PAGE reducing gel		
Primary antibody		YWHAE antibody at 10 µg/ml		
Secondary antibody		Dylight 800-labeled antibody to rabbit IgG (1:1), at 1:5000 dilution		

Human 14-3-3 epsilon/YWHAE Immunoprecipitation(IP) 15722

Anti-YWHAE antibody



Catalog Number: 142734



Human 14-3-3 epsilon/YWHAE Western blot (WB)
15720

Lanes	A	B	C	D
Items				
Sample (whole cell lysate)	HepG2	Jurkat	SHSY5Y	SW480
Sample Volume (µg/lane)	30	30	30	30
Gel	13% SDS-PAGE reducing gel			
Recommended Concentration	1.5 µg/ml			
Secondary Antibody	Dylight 800 labeled Antibody to Rabbit IgG (H+L), at 1:5000 dilution.			
Developed using Odyssey imaging system.				
Explanation	Predicted band size : 29 kDa Observed band size : 32 kDa Additional bands at : 14 kDa and 42 kDa (We are unsure as to the identity of these extra bands.)			