

# Anti-PLS3 antibody



Catalog Number: 142707

## Product name

Anti-PLS3 antibody

## Immunogen

[Human PLS3 / Plastin 3 \(His Tag\) recombinant protein](#)

## Specificity

Human PLS3 / Plastin 3

## Antibody description

Rabbit Polyclonal to Human PLS3

## Preparation

Produced in rabbits immunized with purified, recombinant Human PLS3 / Plastin 3 . PLS3 / Plastin 3 specific IgG was purified by Human PLS3 / Plastin 3 affinity chromatography.

## Formulation

0.2 µm filtered solution in PBS

## Storage

This antibody can be stored at 2°C-8°C for one month without detectable loss of activity. Antibody products are stable for twelve months from date of receipt when stored at -20°C to -80°C.

Preservative-Free.

Sodium azide is recommended to avoid contamination (final concentration 0.05%-0.1%). It is toxic to cells and should be disposed of

properly. Avoid repeated freeze-thaw cycles.

## Clonality

Polyclonal

## Ig Type

Rabbit IgG

## Applications

ELISA, IP

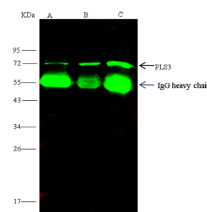
## Dilutions

ELISA: 0.1-0.2 µg/ml

This antibody can be used at 0.1-0.2 µg/ml with the appropriate secondary reagents to detect Human PLS3 / Plastin 3.

IP: 1-4 µl/mg of lysate

## Validations



Items	Lanes	A	B	C
Sample (whole cell lysate)		K562	Hela	Raji
Sample quantity		0.5 mg		
IP antibody quantity		2 µg		
Protein G agarose		15 µl of 50% Protein G Agarose		
Gel		13% SDS-PAGE reducing gel		
Primary antibody		His-PLS3 antibody at 10 µg/ml		
Secondary antibody		DyLight 800-labeled antibody to rabbit IgG (D+L), at 1:5000 dilution		

Human PLS3 / Plastin 3 Immunoprecipitation(IP)  
14729