

# Anti-LRRC39 antibody

Catalog Number: 142689

## Product name

Anti-LRRC39 antibody

## Specificity

Human LRRC39

## Antibody description

Rabbit Polyclonal to Human LRRC39

## Preparation

Produced in rabbits immunized with a synthetic peptide corresponding to the C-terminus of the Human LRRC39, and purified by antigen affinity chromatography.

## Formulation

0.2 µm filtered solution in PBS

## Storage

This antibody can be stored at 2°C-8°C for one month without detectable loss of activity. Antibody products are stable for twelve months from date of receipt when stored at -20°C to -80°C.

Preservative-Free.

Sodium azide is recommended to avoid contamination (final concentration 0.05%-0.1%). It

is toxic to cells and should be disposed of properly. Avoid repeated freeze-thaw cycles.

## Clonality

Polyclonal

## Ig Type

Rabbit IgG

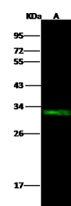
## Applications

WB

## Dilutions

WB: 5-20 µg/ml

## Validations



Items	Lanes
Sample (whole cell lysate)	MDA-MB231
Sample Volume (µg/Lane)	30
Gel	13%SDS-PAGE reducing gel
Recommended Concentration	5-20 µg/ml
Secondary Antibody	Dylight 800-labeled Antibody To Rabbit IgG (H+L), at 1:5000 dilution.
Explanation	Developed using Odyssey imaging system. Predicted band size : 39 kDa Observed band size : 32 kDa

Human LRRC39 Western blot (WB) 14671