

# Anti-DHRS2 antibody



Catalog Number: 142687

## Product name

Anti-DHRS2 antibody

## Specificity

Human DHRS2

## Antibody description

Rabbit Polyclonal to Human DHRS2

## Preparation

Produced in rabbits immunized with a synthetic peptide corresponding to the C-terminus of the Human DHRS2, and purified by antigen affinity chromatography.

## Formulation

0.2 µm filtered solution in PBS

## Storage

This antibody can be stored at 2°C-8°C for one month without detectable loss of activity. Antibody products are stable for twelve months from date of receipt when stored at -20°C to -80°C.

Preservative-Free.

Sodium azide is recommended to avoid contamination (final concentration 0.05%-0.1%). It

is toxic to cells and should be disposed of properly. Avoid repeated freeze-thaw cycles.

## Clonality

Polyclonal

## Ig Type

Rabbit IgG

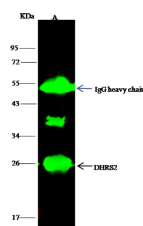
## Applications

IP

## Dilutions

IP: 1-4 µl/mg of lysate

## Validations



| Item                      | Lanes | A  |
|---------------------------|-------|--|
| Sample (wholecell lysate) |       | HepG2  |
| Sample-quantity           |       | 0.5 mg   |
| IP antibody quantity      |       | 4 µl.  |
| Protein G agarose         |       | 15 µl of 50% Protein G agarose                                       |
| Gel                       |       | 13% SDS-PAGE reducing gel  |
| Primary antibody          |       | KLEI-SMCC-SINOA2488+KLEI-SMCC-SINOA2815 antibody at 10 µg/ml         |
| Secondary antibody        |       | DyLight 800-labeled antibody to rabbit IgG (H+L), at 1:5000 dilution |

Human DHRS2 Immunoprecipitation(IP) 14670