

# Anti-PPIF antibody



Catalog Number: 142674

## Product name

Anti-PPIF antibody

## Immunogen

[Human PPIF/Cyclophilin F \(His Tag\) recombinant protein](#)

## Specificity

Human PPIF / Cyclophilin F

## Antibody description

Rabbit Polyclonal to Human PPIF

## Preparation

Produced in rabbits immunized with purified, recombinant Human PPIF / Cyclophilin F . PPIF / Cyclophilin F specific IgG was purified by Human PPIF / Cyclophilin F affinity chromatography.

## Formulation

0.2 µm filtered solution in PBS

## Storage

This antibody can be stored at 2°C-8°C for one month without detectable loss of activity. Antibody products are stable for twelve months from date of receipt when stored at -20°C to -80°C.

Preservative-Free.

Sodium azide is recommended to avoid contamination (final concentration 0.05%-0.1%). It is toxic to cells and should be disposed of properly. Avoid repeated freeze-thaw cycles.

## Clonality

Polyclonal

## Ig Type

Rabbit IgG

## Applications

WB, ELISA, IP

## Dilutions

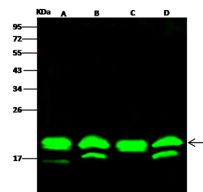
WB: 1-5 µg/ml

ELISA: 0.1-0.2 µg/ml

This antibody can be used at 0.1-0.2 µg/ml with the appropriate secondary reagents to detect Human PPIF / Cyclophilin F.

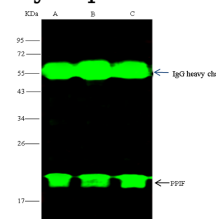
IP: 1-4 µl/mg of lysate

## Validations



Lanes	A	B	C	D
Sample (whole cell lysate)	HeLa	HepG2	HEK293	HL60
Sample Volume (µg/lane)	30	30	30	30
Gel	13% SDS-PAGE reducing gel			
Recommended Concentration	1.5 µg/ml			
Secondary Antibody	Dylight 800 labeled Antibody to Rabbit IgG (H+L), at 1:5000 dilution.			
Explanation	Developed using Odyssey imaging system. Predicted band size : 22 kDa Observed band size : 20 kDa Additional bands at : 17 kDa (We are unsure as to the identity of these extra bands.)			

## Human PPIF/Cyclophilin F Western blot (WB)



Lanes	A	B	C
Sample (whole cell lysate)	HL-60	HeLa	HepG2
Sample quantity	0.5 mg		
IP antibody quantity	4 µl.		
Protein G agarose	15 µl of 50% Protein G Agarose		
Gel	13% SDS-PAGE reducing gel		
Primary antibody	S3-PPIF-His antibody at 10 µg/ml		
Secondary antibody	Dylight 800-labeled antibody to rabbit IgG (H+L), at 1:5000 dilution		

14725

## Human PPIF/Cyclophilin F

Immunoprecipitation(IP) 14726