

Anti-FLI1 antibody



Catalog Number: 142659

Product name

Anti-FLI1 antibody

Specificity

Human FLI1

Antibody description

Rabbit Polyclonal to Human FLI1

Preparation

Produced in rabbits immunized with a synthetic peptide corresponding to the C-terminus of the Human FLI1, and purified by antigen affinity chromatography.

Formulation

0.2 µm filtered solution in PBS

Storage

This antibody can be stored at 2°C-8°C for one month without detectable loss of activity. Antibody products are stable for twelve months from date of receipt when stored at -20°C to -80°C.

Preservative-Free.

Sodium azide is recommended to avoid contamination (final concentration 0.05%-0.1%). It

is toxic to cells and should be disposed of properly. Avoid repeated freeze-thaw cycles.

Clonality

Polyclonal

Ig Type

Rabbit IgG

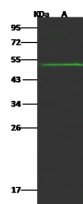
Applications

WB

Dilutions

WB: 5-20 µg/ml

Validations



Items	Lanes
Sample (whole cell lysate)	A
Sample Volume (µg/lane)	NIH3T3 30
Gel	13% SDS-PAGE reducing gel
Recommended Concentration	5-20 µg/ml
Secondary Antibody	DyLight 800-labeled Antibody to Rabbit IgG (H+L), at 1:5000 dilution.
Explanation	Developed using Odyssey imaging system. Predicted band size : 51 kDa Observed band size : 51 kDa

Human FLI1 Western blot (WB) 14665