

Anti-MRE11A antibody



Catalog Number: 142636

Product name

Anti-MRE11A antibody

Specificity

Human MRE11A

Antibody description

Rabbit Polyclonal to Human MRE11A

Preparation

Produced in rabbits immunized with a synthetic peptide corresponding to the center region of the Human MRE11A, and purified by antigen affinity chromatography.

Formulation

0.2 µm filtered solution in PBS

Storage

This antibody can be stored at 2°C-8°C for one month without detectable loss of activity. Antibody products are stable for twelve months from date of receipt when stored at -20°C to -80°C.

Preservative-Free.

Sodium azide is recommended to avoid contamination (final concentration 0.05%-0.1%). It is toxic to cells and should be disposed of properly. Avoid repeated freeze-thaw cycles.

Clonality

Polyclonal

Ig Type

Rabbit IgG

Applications

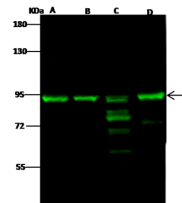
WB, IP

Dilutions

WB: 5-20 µg/ml

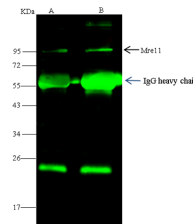
IP: 4-8 µl/mg of lysate

Validations



Items	Lanes	A	B	C	D
Sample (whole cell lysate)		HeLa	Jurkat	A431	K562
Sample Volume (µg/lane)		30	30	30	30
Gel		7.5% SDS-PAGE reducing gel			
Recommended Concentration		5-20 µg/ml			
Secondary Antibody		Dylight 800-labeled Antibody to Rabbit IgG (H+L), at 1:5000 dilution.			
		Developed using Odyssey imaging system.			
Explanation		Predicted band size : 81 kDa Observed band size : 90 kDa			

Human MRE11A Western blot (WB) 14652



Items	Lanes	A	B
Sample (whole cell lysate)		HeLa	Jurkat
Sample quantity		0.5 mg	
IP antibody quantity		4 µL	
Protein G agarose		15 µl of 50% Protein G Agarose	
Gel		15% SDS-PAGE reducing gel	
Primary antibody		KLEH-SMCC-SINO2173+KLEH-SMCC-SINO2268 antibody at 10 µg/ml	
Secondary antibody		Dylight 800-labeled antibody to rabbit IgG (H+L), at 1:5000 dilution	

Human MRE11A Immunoprecipitation(IP) 14653