

Anti-CTNNA3 antibody



Catalog Number: 142635

Product name

Anti-CTNNA3 antibody

Specificity

Human CTNNA3

Antibody description

Rabbit Polyclonal to Human CTNNA3

Preparation

Produced in rabbits immunized with a synthetic peptide corresponding to the N-terminus of the Human CTNNA3, and purified by antigen affinity chromatography.

Formulation

0.2 µm filtered solution in PBS

Storage

This antibody can be stored at 2°C-8°C for one month without detectable loss of activity. Antibody products are stable for twelve months from date of receipt when stored at -20°C to -80°C.

Preservative-Free.

Sodium azide is recommended to avoid contamination (final concentration 0.05%-0.1%). It is toxic to cells and should be disposed of properly. Avoid repeated freeze-thaw cycles.

Clonality

Polyclonal

Ig Type

Rabbit IgG

Applications

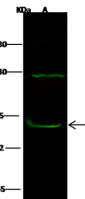
WB, IP

Dilutions

WB: 5-20 µg/ml

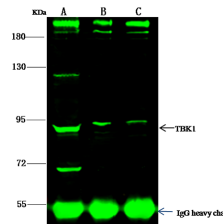
IP: 1-4 µl/mg of lysate

Validations



| Items | Lanes | A |
|----------------------------|-------|-------------------------------------------------------------------------------------------------------------------------------------------------------|
| Sample (whole cell lysate) | | HeLa |
| Sample Volume (µg/lane) | | 30 |
| Gel | | 7.5% SDS-PAGE reducing gel |
| Recommended Concentration | | 5-20 µg/ml |
| Secondary Antibody | | Dylight 800-labeled Antibody to Rabbit IgG (1:1k), at 1:5000 dilution. |
| | | Developed using Odyssey imaging system. |
| Explanation | | Predicted band size : 84 kDa Observed band size : 87 kDa Additional bands at : 125 kDa (We are unsure as to the identity of these extra bands.) |

Human CTNNA3 Western blot (WB) 14650



| Items | Lanes | A | B | C |
|----------------------------|-------|----------------------------------------------------------------------|--------|------|
| Sample (whole cell lysate) | | 293T | Jurkat | Hela |
| Sample quantity | | 0.5 mg | | |
| IP antibody quantity | | 4 µL | | |
| Protein G agarose | | 15 µl of 50% Protein G Agarose | | |
| Gel | | 7.5% SDS-PAGE reducing gel | | |
| Primary antibody | | KLIJ-SMCC-SINOA2079+KLIJ-SMCC-SINOA2172 antibody at 10 µg/ml | | |
| Secondary antibody | | Dylight 800-labeled antibody to rabbit IgG (H+L), at 1:5000 dilution | | |

Human CTNNA3 Immunoprecipitation(IP) 14651