

# Anti-LRP6 antibody



Catalog Number: 142629

## Product name

Anti-LRP6 antibody

## Specificity

Human LRP6

## Antibody description

Rabbit Polyclonal to Human LRP6

## Preparation

Produced in rabbits immunized with a synthetic peptide corresponding to the N-terminus of the Human LRP6, and purified by antigen affinity chromatography.

## Formulation

0.2 µm filtered solution in PBS

## Storage

This antibody can be stored at 2°C-8°C for one month without detectable loss of activity. Antibody products are stable for twelve months from date of receipt when stored at -20°C to -80°C. Preservative-Free.

Sodium azide is recommended to avoid contamination (final concentration 0.05%-0.1%). It is toxic to cells and should be disposed of properly. Avoid repeated freeze-thaw cycles.

## Clonality

Polyclonal

## Ig Type

Rabbit IgG

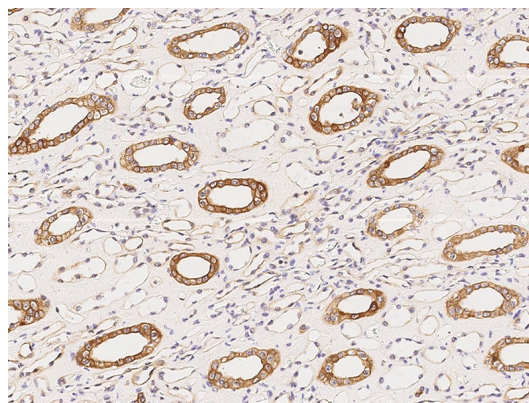
## Applications

IHC-P

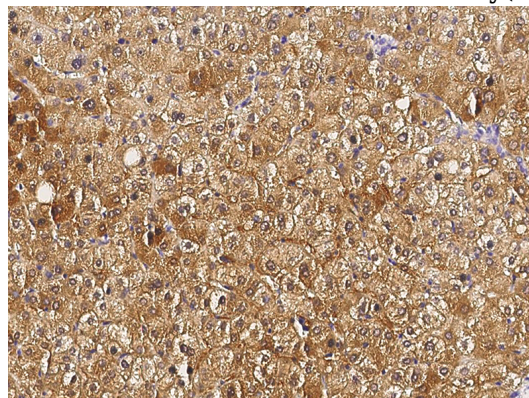
## Dilutions

IHC-P: 0.1-2 µg/mL

## Validations



Human LRP6 Immunohistochemistry(IHC) 14646



Human LRP6 Immunohistochemistry(IHC) 14647