

Anti-Spike antibody



Catalog Number: 142569

Product name

Anti-Spike antibody

Immunogen

[MERS-CoV CoV Spike glycoprotein \(aa 1-725, His Tag\)](#)

Specificity

MERS-CoV (NCoV / Novel coronavirus) Spike Protein S1

Antibody description

Rabbit Polyclonal to MERS-CoV Spike

Preparation

Produced in rabbits immunized with purified, recombinant MERS-CoV (NCoV / Novel coronavirus) Spike Protein S1 . MERS-CoV (NCoV / Novel coronavirus) Spike Protein S1 specific IgG was purified by MERS-CoV (NCoV / Novel coronavirus) Spike Protein S1 affinity chromatography.

Formulation

0.2 µm filtered solution in PBS

Storage

This antibody can be stored at 2°C-8°C for one month without detectable loss of activity. Antibody products are stable for twelve months from date of receipt when stored at -20°C to -80°C.

Preservative-Free.

Sodium azide is recommended to avoid contamination (final concentration 0.05%-0.1%). It

is toxic to cells and should be disposed of properly. Avoid repeated freeze-thaw cycles.

Clonality

Polyclonal

Ig Type

Rabbit IgG

Applications

WB, ELISA, IP

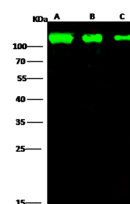
Dilutions

WB: 0.5-5 µg/ml

ELISA: 0.1-0.2 µg/ml

This antibody can be used at 0.1-0.2 µg/ml with the appropriate secondary reagents to detect MERS-CoV (NCoV / Novel coronavirus) Spike Protein S1.

Validations



Items	Lanes	A	B	C
Sample (Recombinant protein)		S(2C-EMC)-His (Cat#40069-V08H)		
Sample Volume (ng/lane)		20	5	1
Gel		13% SDS-PAGE reducing gel		
Recommended Concentration		0.5-5 µg/ml		
Secondary Antibody		Dylight 800-labeled Antibody to Rabbit IgG (H+L), at 1:5000 dilution.		
Developed using Odyssey imaging system.				

MERS-CoV (NCoV / Novel coronavirus) Spike Protein S1 Antibody, Rabbit PAb, Antigen Affinity Purified, Western blot