

# Anti-GPS2 antibody



Catalog Number: 142562

## Product name

Anti-GPS2 antibody

## Specificity

Human GPS2

## Antibody description

Rabbit Polyclonal to Human GPS2

## Preparation

Produced in rabbits immunized with a synthetic peptide corresponding to the center region of the Human GPS2, and purified by antigen affinity chromatography.

## Formulation

0.2 µm filtered solution in PBS

## Storage

This antibody can be stored at 2°C-8°C for one month without detectable loss of activity. Antibody products are stable for twelve months from date of receipt when stored at -20°C to -80°C.

Preservative-Free.

Sodium azide is recommended to avoid contamination (final concentration 0.05%-0.1%). It

is toxic to cells and should be disposed of properly. Avoid repeated freeze-thaw cycles.

## Clonality

Polyclonal

## Ig Type

Rabbit IgG

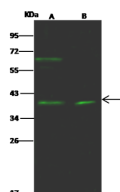
## Applications

WB

## Dilutions

WB: 5-20 µg/ml

## Validations



Lanes	A	B
Items		
Sample (whole cell lysate)	A431	HeLa
Sample Volume (µg/lane)	30	30
Gel	13% SDS-PAGE reducing gel	
Recommended Concentration	5-20 µg/ml	
Secondary Antibody	Dylight 800-labeled Antibody to Rabbit IgG (H+L), at 1:5000 dilution.	
Developed using Odyssey imaging system.		
Explanation	Predicted band size : 37 kDa Observed band size : 39 kDa Additional bands at : 64 kDa [We are unsure as to the identity of these extra bands.]	

Human GPS2 Western blot (WB) 14629