

Anti-MEP1B antibody



Catalog Number: 142480

Product name

Anti-MEP1B antibody

Specificity

Human MEP1B / Meprin beta

Antibody description

Rabbit Polyclonal to Human MEP1B

Preparation

Produced in rabbits immunized with a synthetic peptide corresponding to the C-terminus of the Human MEP1B / Meprin beta, and purified by antigen affinity chromatography.

Formulation

0.2 µm filtered solution in PBS

Storage

This antibody can be stored at 2°C-8°C for one month without detectable loss of activity. Antibody products are stable for twelve months from date of receipt when stored at -20°C to -80°C.

Preservative-Free.

Sodium azide is recommended to avoid contamination (final concentration 0.05%-0.1%). It is toxic to cells and should be disposed of

properly. Avoid repeated freeze-thaw cycles.

Clonality

Polyclonal

Ig Type

Rabbit IgG

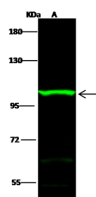
Applications

WB

Dilutions

WB: 5-20 µg/ml

Validations



| Lanes | A |
|----------------------------|---|
| Items | |
| Sample (whole cell lysate) | A431 |
| Sample Volume (µg/lane) | 30 |
| Gel | 7.5% SDS-PAGE reducing gel |
| Recommended Concentration | 5-20 µg/ml |
| Secondary Antibody | Dylight 800 labeled Antibody to Rabbit IgG (H+L), at 1:5000 dilution. Developed using Odyssey imaging system. |
| Explanation | Predicted band size : 84 kDa Observed band size : 105 kDa Additional bands at : 62 kDa (We are unsure as to the identity of these extra bands.) |

MEP1B / Meprin beta Antibody, Rabbit PAb, Antigen Affinity Purified, Western blot