

Anti-SCLY antibody



Catalog Number: 142470

Product name

Anti-SCLY antibody

Immunogen

[Human SCLY / Selenocysteine Lyase \(His Tag\) recombinant protein](#)

Specificity

Human SCLY / Selenocysteine Lyase

Antibody description

Rabbit Polyclonal to Human SCLY

Preparation

Produced in rabbits immunized with purified, recombinant Human SCLY / Selenocysteine Lyase. SCLY / Selenocysteine Lyase specific IgG was purified by Human SCLY / Selenocysteine Lyase affinity chromatography.

Formulation

0.2 µm filtered solution in PBS

Storage

This antibody can be stored at 2°C-8°C for one month without detectable loss of activity. Antibody products are stable for twelve months from date of receipt when stored at -20°C to -80°C.

Preservative-Free.

Sodium azide is recommended to avoid contamination (final concentration 0.05%-0.1%). It is toxic to cells and should be disposed of properly. Avoid repeated freeze-thaw cycles.

Clonality

Polyclonal

Ig Type

Rabbit IgG

Applications

WB, ELISA, IP

Dilutions

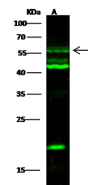
WB: 5-20 µg/ml

ELISA: 0.1-0.2 µg/ml

This antibody can be used at 0.1-0.2 µg/ml with the appropriate secondary reagents to detect Human SCLY / Selenocysteine Lyase.

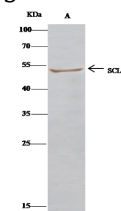
IP: 2-8 uL/mg of lysate

Validations



Items	Lanes	A
Sample (whole cell lysate)		293T
Sample Volume (µg/lane)		30
Gel		13% SDS-PAGE reducing gel
Recommended Concentration		5-20 µg/ml
Secondary Antibody		Dylight 800-labeled Antibody to Rabbit IgG (H+L), at 1:5000 dilution
Explanation		Developed using Odyssey imaging system. Predicted band size : 48 kDa Observed band size : 55 kDa Additional bands at : 47 kDa, 45 kDa and 18 kDa (We are unsure as to the identity of these extra bands.)

SCLY / Selenocysteine Lyase Antibody, Rabbit PAb, Antigen Affinity Purified, Western blot



Items	Lanes	A
Sample (whole cell lysate)		293T
Sample quantity		0.5 mg
IP antibody quantity		4 µL
Protein G agarose		15 µl of 50% Protein G Agarose
Gel		13% SDS-PAGE reducing gel
Primary antibody		SCLY-His antibody at 10 µg/ml
Secondary antibody		Clean-Block IP Detection Reagent (HRP) at 1:500 dilution.

SCLY / Selenocysteine Lyase Antibody, Rabbit PAb, Antigen Affinity Purified, Immunoprecipitation