

Anti-MUCL1 antibody



Catalog Number: 142469

Product name

Anti-MUCL1 antibody

Immunogen

[Human SBEM / MUCL1 \(His Tag\) recombinant protein](#)

Specificity

Human SBEM / MUCL1

Antibody description

Rabbit Polyclonal to Human MUCL1

Preparation

Produced in rabbits immunized with purified, recombinant Human SBEM / MUCL1. SBEM / MUCL1 specific IgG was purified by Human SBEM / MUCL1 affinity chromatography.

Formulation

0.2 µm filtered solution in PBS

Storage

This antibody can be stored at 2°C-8°C for one month without detectable loss of activity. Antibody products are stable for twelve months from date of receipt when stored at -20°C to -80°C.

Preservative-Free.

Sodium azide is recommended to avoid contamination (final concentration 0.05%-0.1%). It is toxic to cells and should be disposed of

properly. Avoid repeated freeze-thaw cycles.

Clonality

Polyclonal

Ig Type

Rabbit IgG

Applications

ELISA, IHC-P

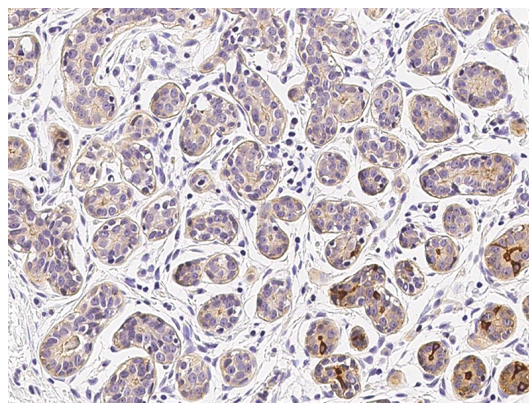
Dilutions

ELISA: 0.1-0.2 µg/ml

This antibody can be used at 0.1-0.2 µg/ml with the appropriate secondary reagents to detect Human SBEM / MUCL1.

IHC-P: 0.5-2 µg/mL

Validations



SBEM / MUCL1 Antibody, Rabbit PAb, Antigen Affinity Purified, Immunohistochemistry